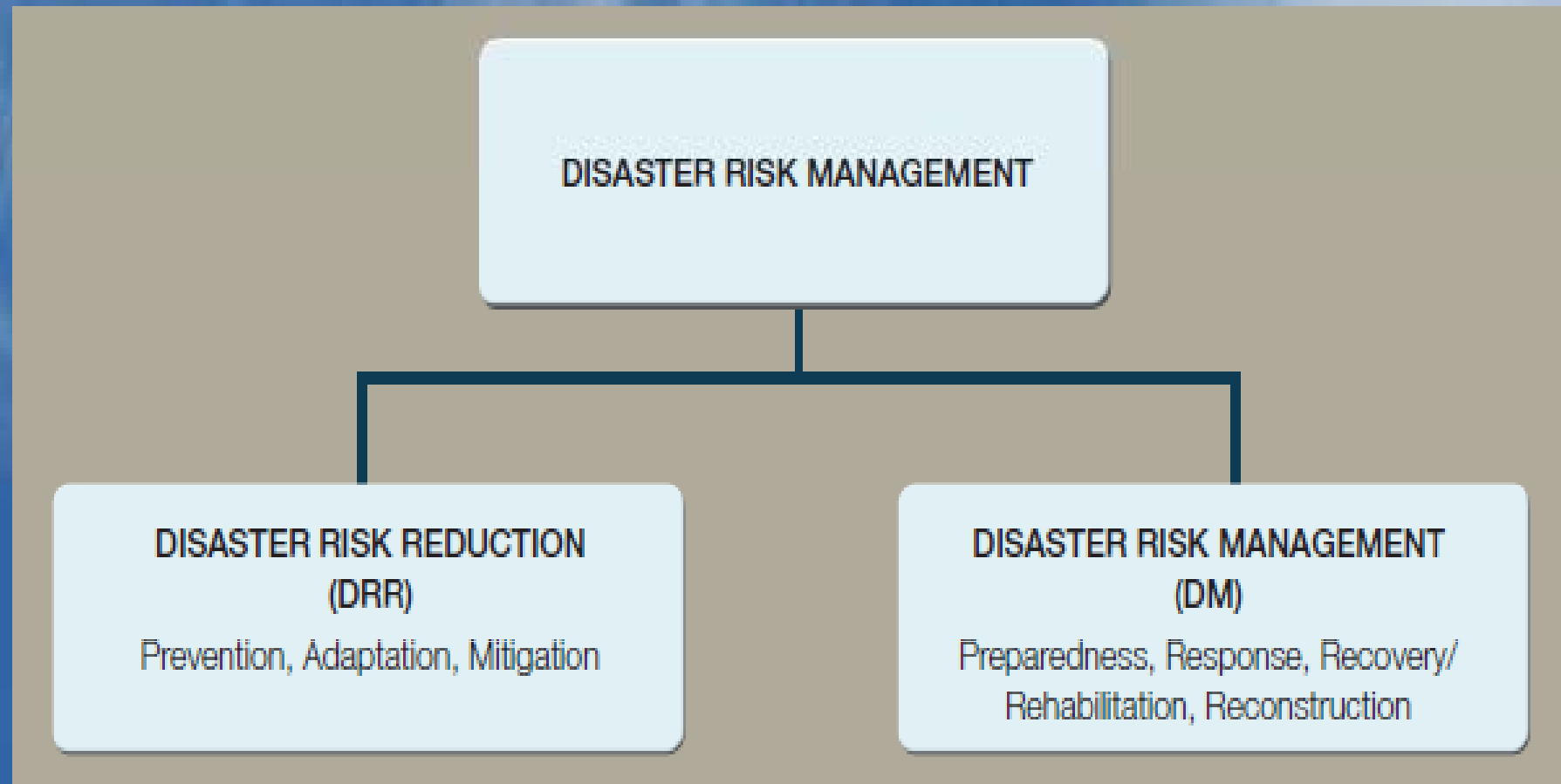


PALAU NATIONAL DISASTER RISK MANAGEMENT FRAMEWORK 2010

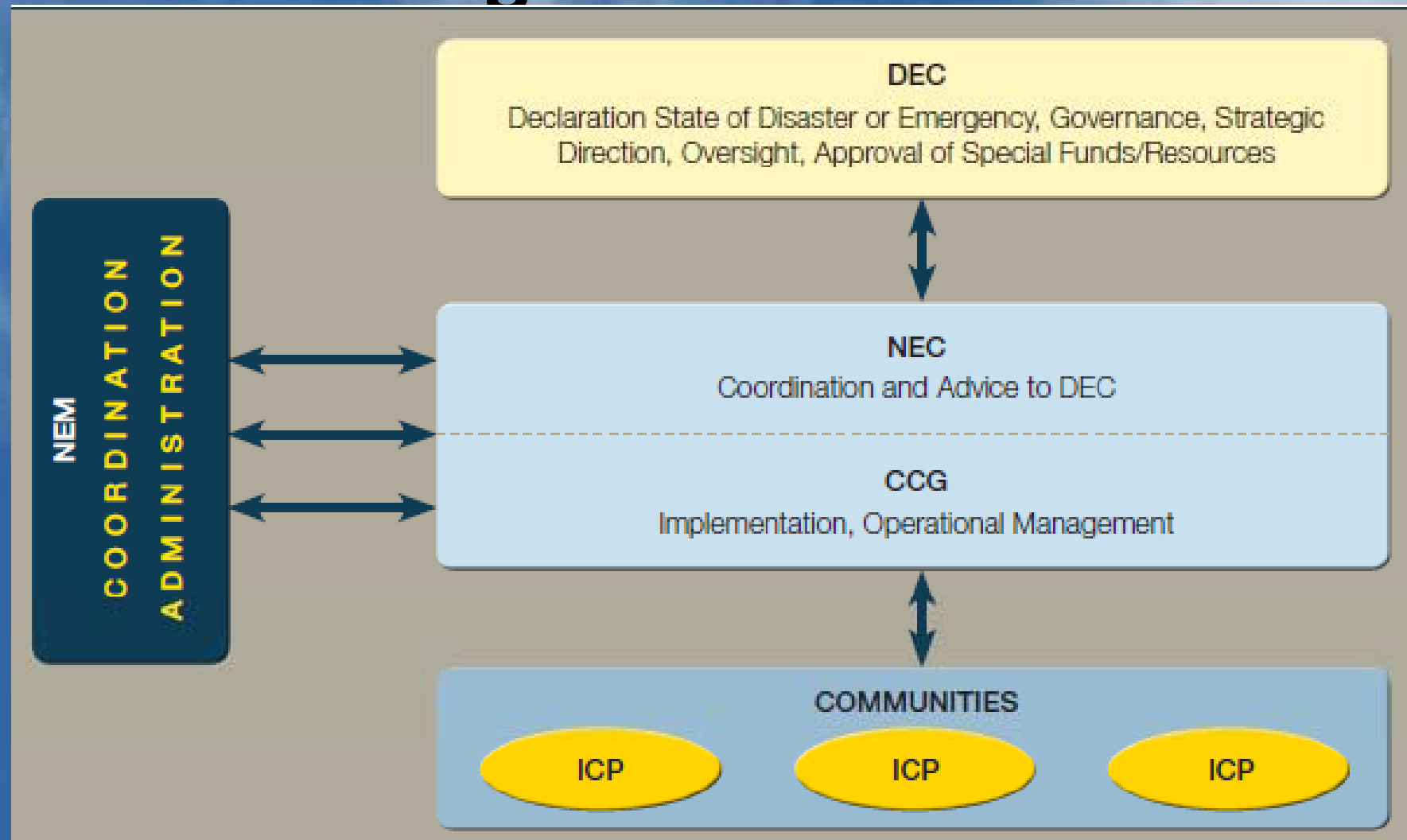
Presentation by Richard L. Misech



The DISASTER RISK MANAGEMENT Model



National Disaster and Emergency Management Structure



The National Emergency Committee (NEC)

The NEC will be comprised of representatives from among the following ministries, bureaus, divisions and agencies:

- Office of the Vice President (Vice President/Chair)
- A Minister, Alternate Chair
- Office of the President
- NEMO (Coordinator)
- Attorney General's Office (Attorney General or Designee)
- Bureau of Youth & Parks & Recreation (Director or Designee)
- Bureau of Public Health (Director or Designee)
- Bureau of Public Works (Director or Designee)
- Bureau of Public Safety (Director or Designee)
- Palau Community College (President or designee)
- Bureau of Education Administration (Director or Designee)
- Palau Public Utility Corporation (General Manager or Designee)
- Palau National Communications Corporation (General Manager or Designee)
- Foreign Affairs (Directors or Designees)
- Bureau of Domestic Affairs (Director or Designee)
- Bureau of Agriculture (Director or Designee)
- Governors' Association (Designee)
- Palau Red Cross Society (Executive Director or Designee)
- National Weather Service (Meteorologist-in-Charge or Designee)
- Office of Environmental Response and Coordination (National Environmental Planner or Designee)
- Environmental Quality Protection Board (Executive Officer or Designee)
- Bureau of Aviation (Director or Designee)
- Division of Property & Supply (Chief or Designee)

NATIONAL HAZARDS PROFILE

Natural Hazards		Level of Risk
Storm Surge		High
Drought		High
Typhoon		High
Sea-level rise (sea-water intrusion/soil Saline/coastal inundation & erosion		High
Tsunami		Low
Earthquake		Low
Landslides		Low
Human-induced and other Hazards		Level of Risk
Oil spill		High
Water contamination including sewerage		High
Solid waste disposal		High
Wildlife behavior (affecting aircraft movement)		High
Increased sedimentation of watershed/ coastal waters		High
Fire (industrial areas)		High
Fire (residential)		Medium
Invasive species		Medium
Hazardous substances spill		Medium
Emerging/infectious disease		High
Terrorism		Low
Airport/port incidents		Low
Civil uprising		Low
Political instability		Low

A scenic view of a tropical bay with a rainbow arching over the water and lush green hills in the foreground. The text "Thank you very much!" is overlaid in the center.

Thank you very much!