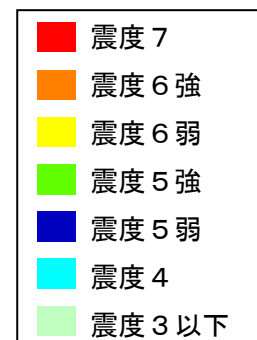
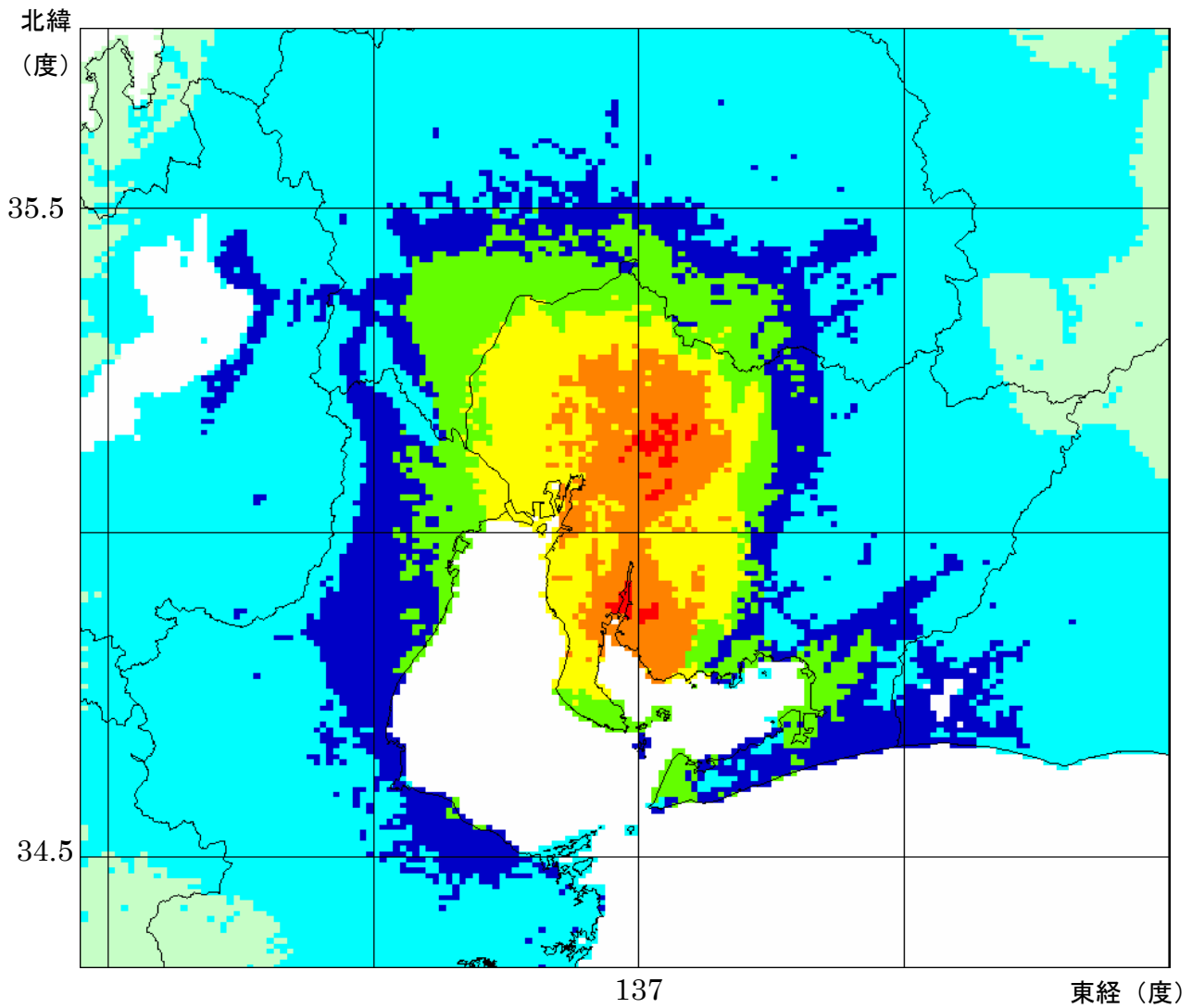


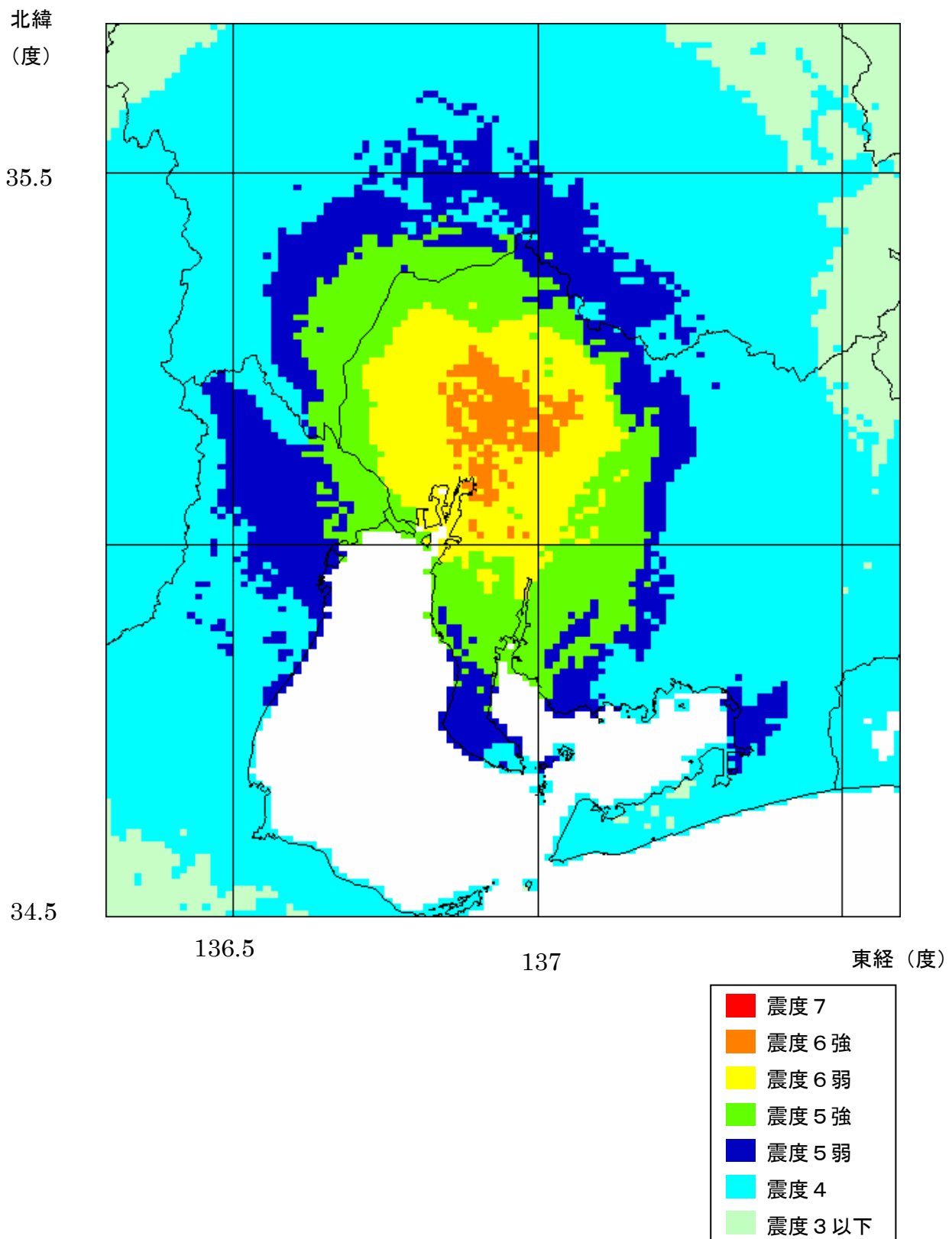
3. 地震別震度、中間指標

(1) 震度分布

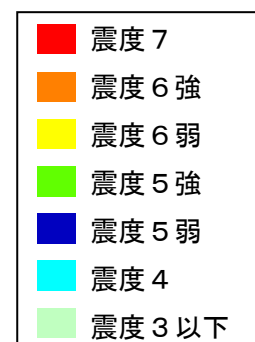
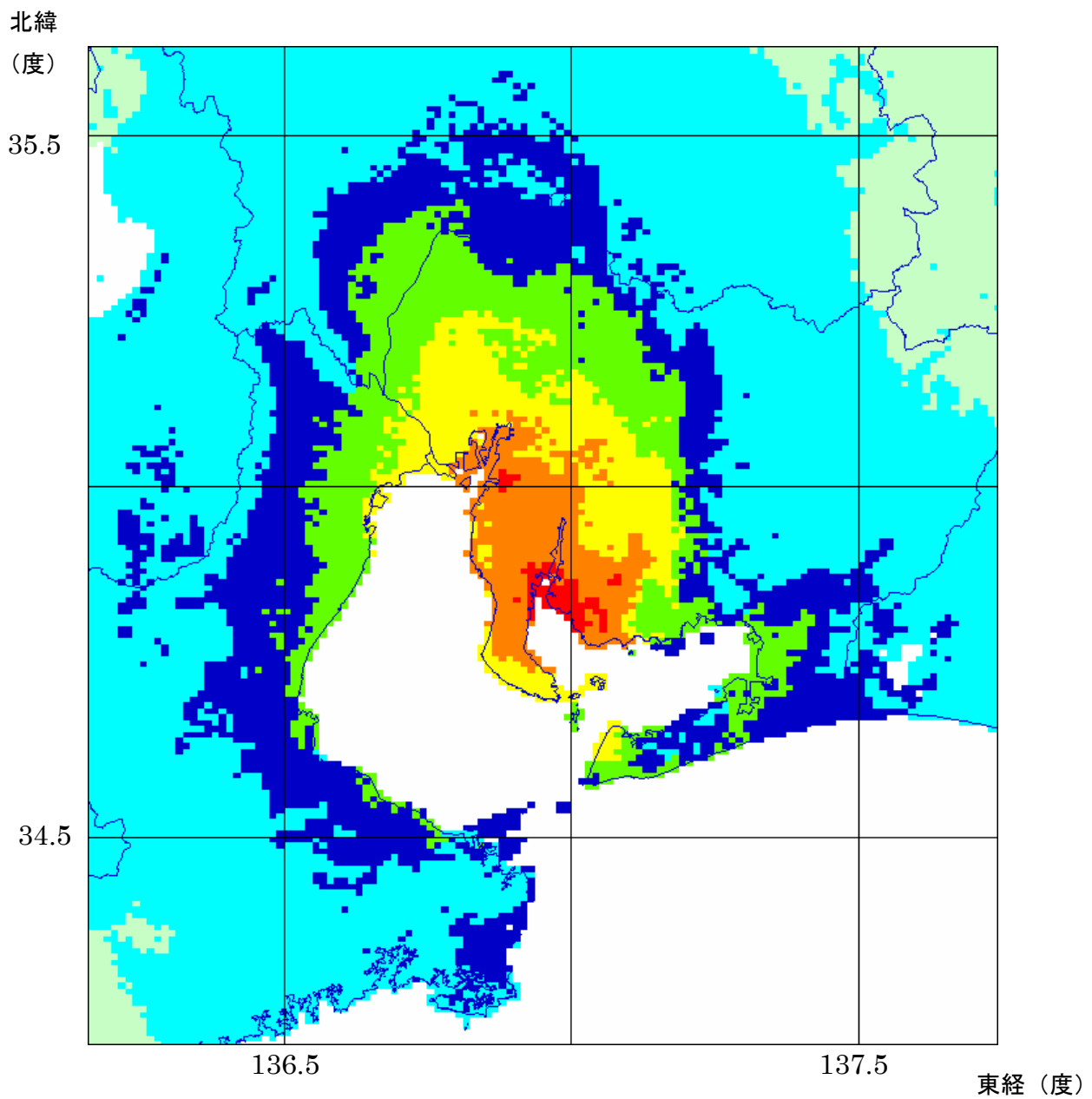
01 猿投—高浜断層帯の地震 (M7.6)



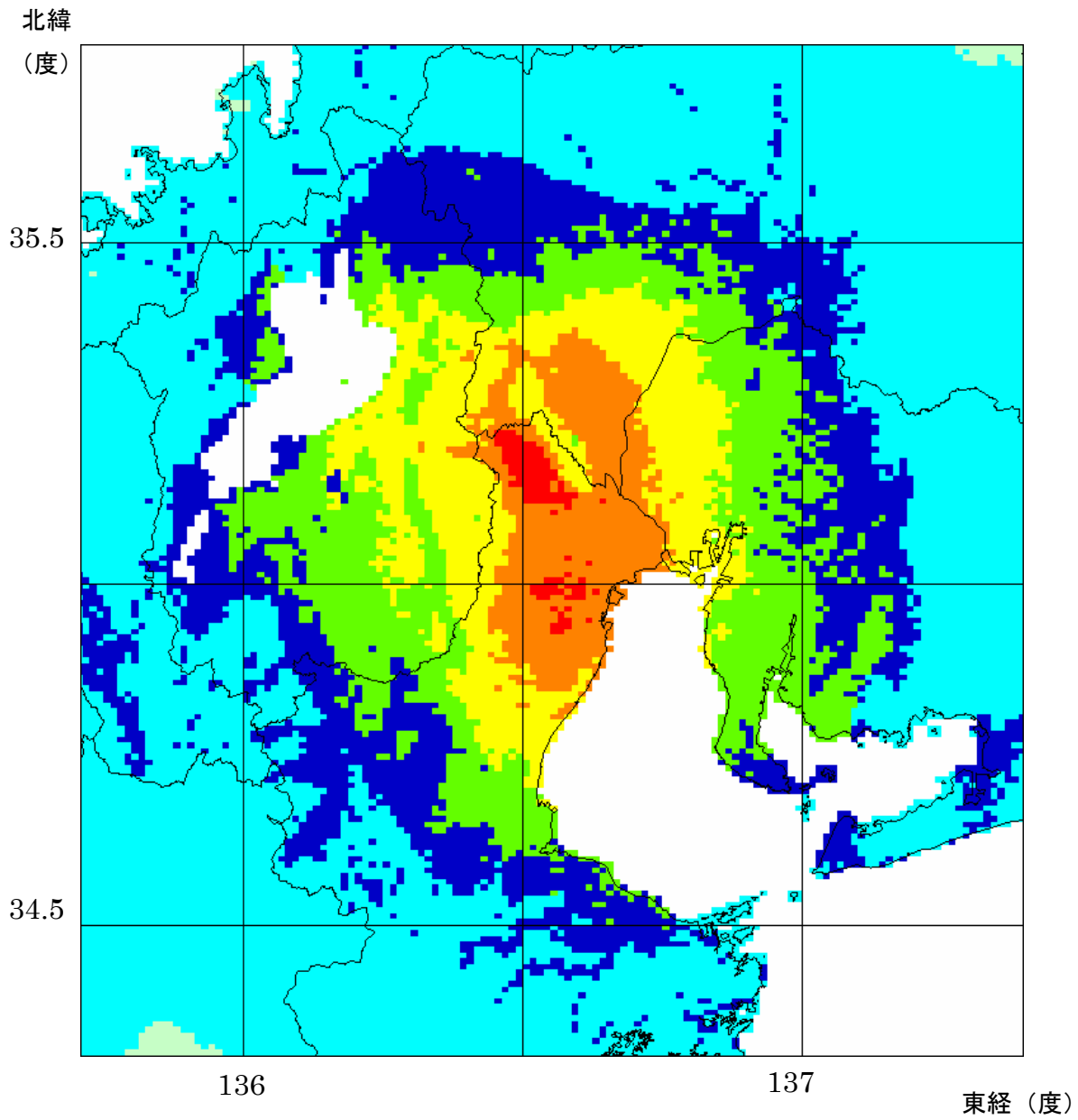
02 名古屋市直下M6.9の地震



03 加木屋断層帯の地震 (M7.4)



04 養老－桑名－四日市断層帯の地震 (M7.7)

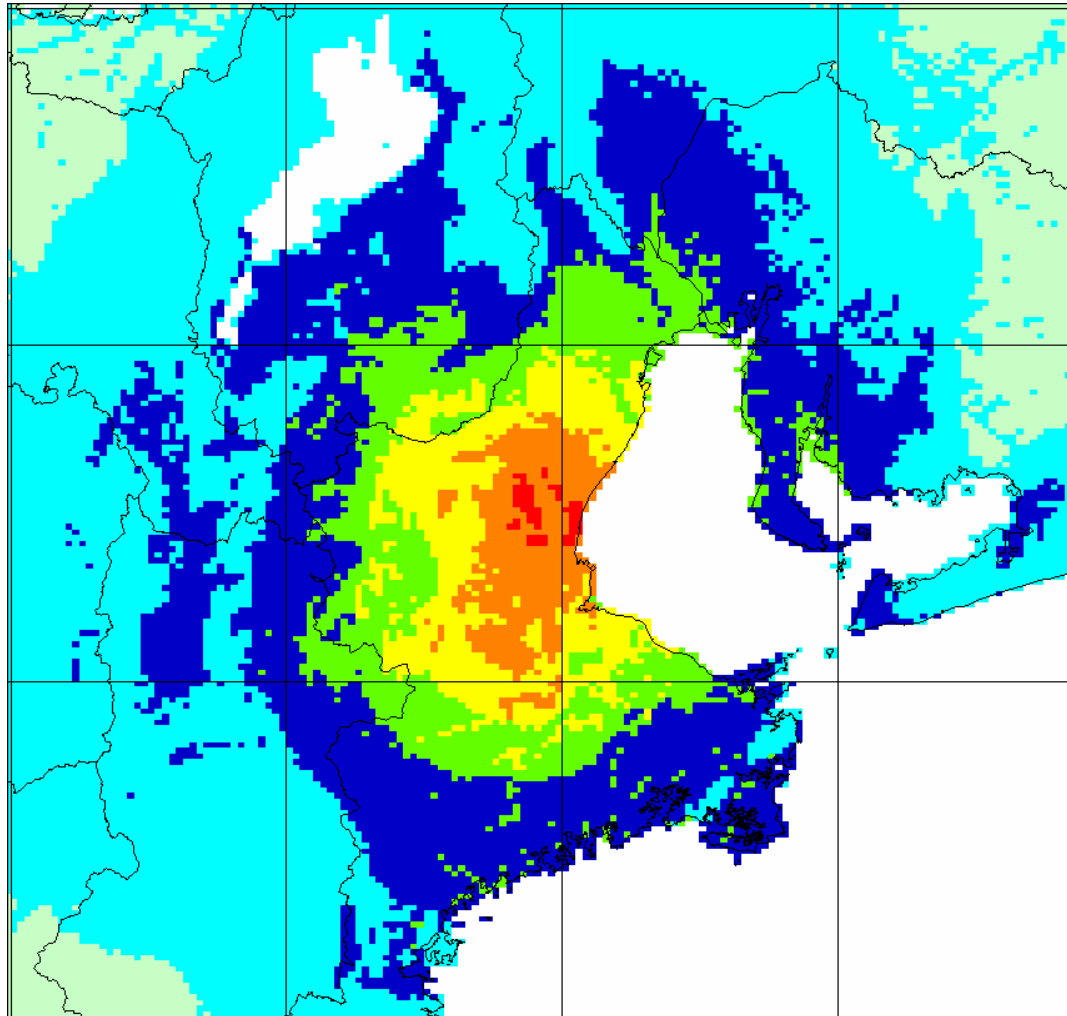


05 布引山地東縁断層帯東部の地震 (M7.6)

北緯
(度)

35

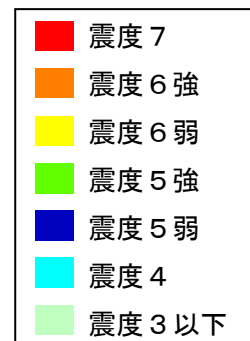
34



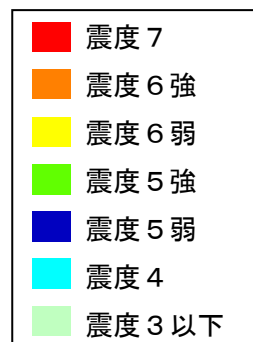
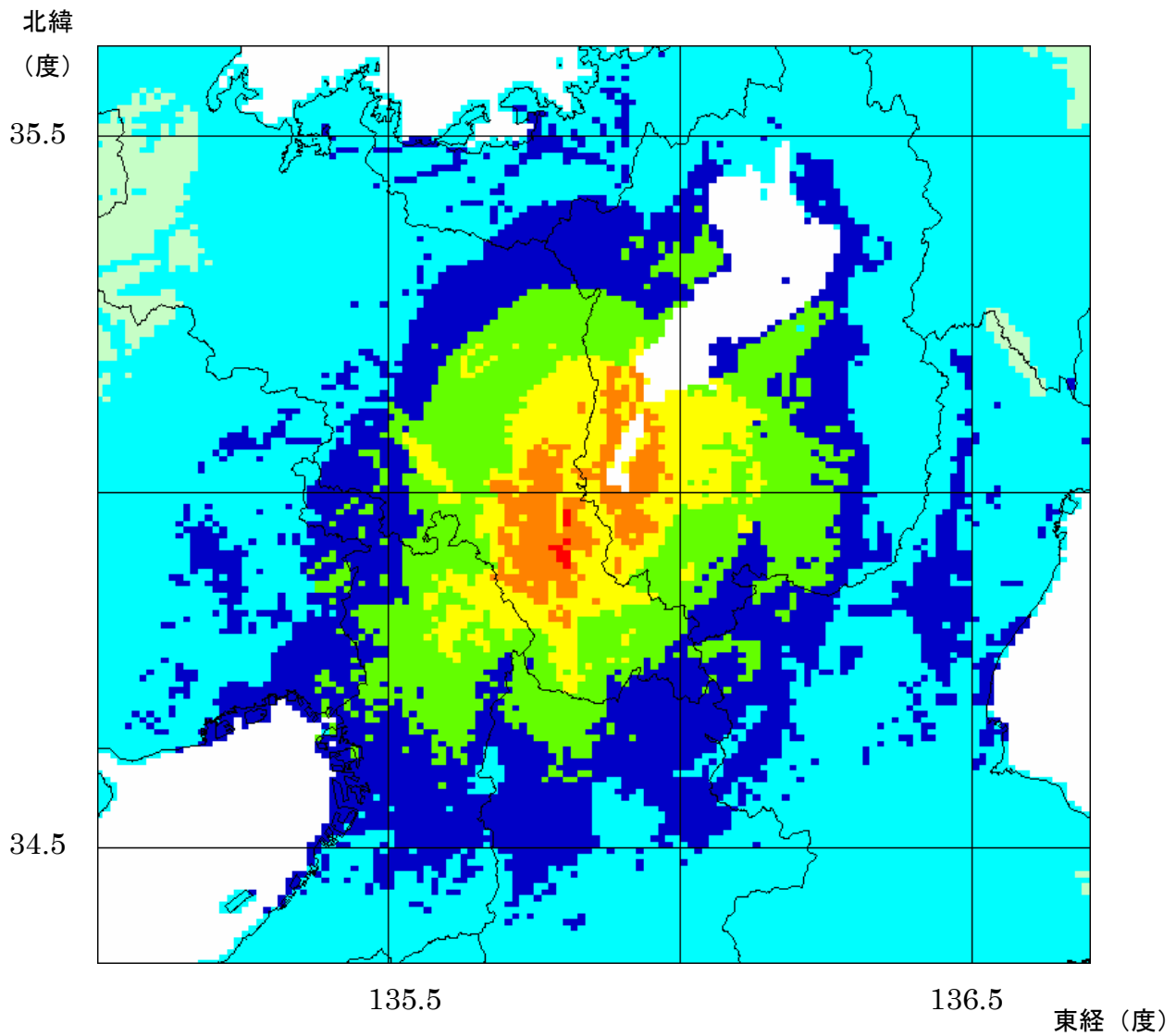
136

137

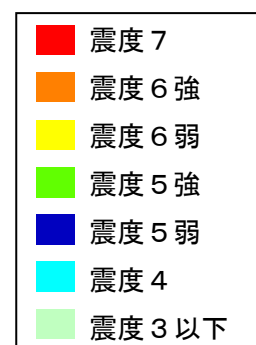
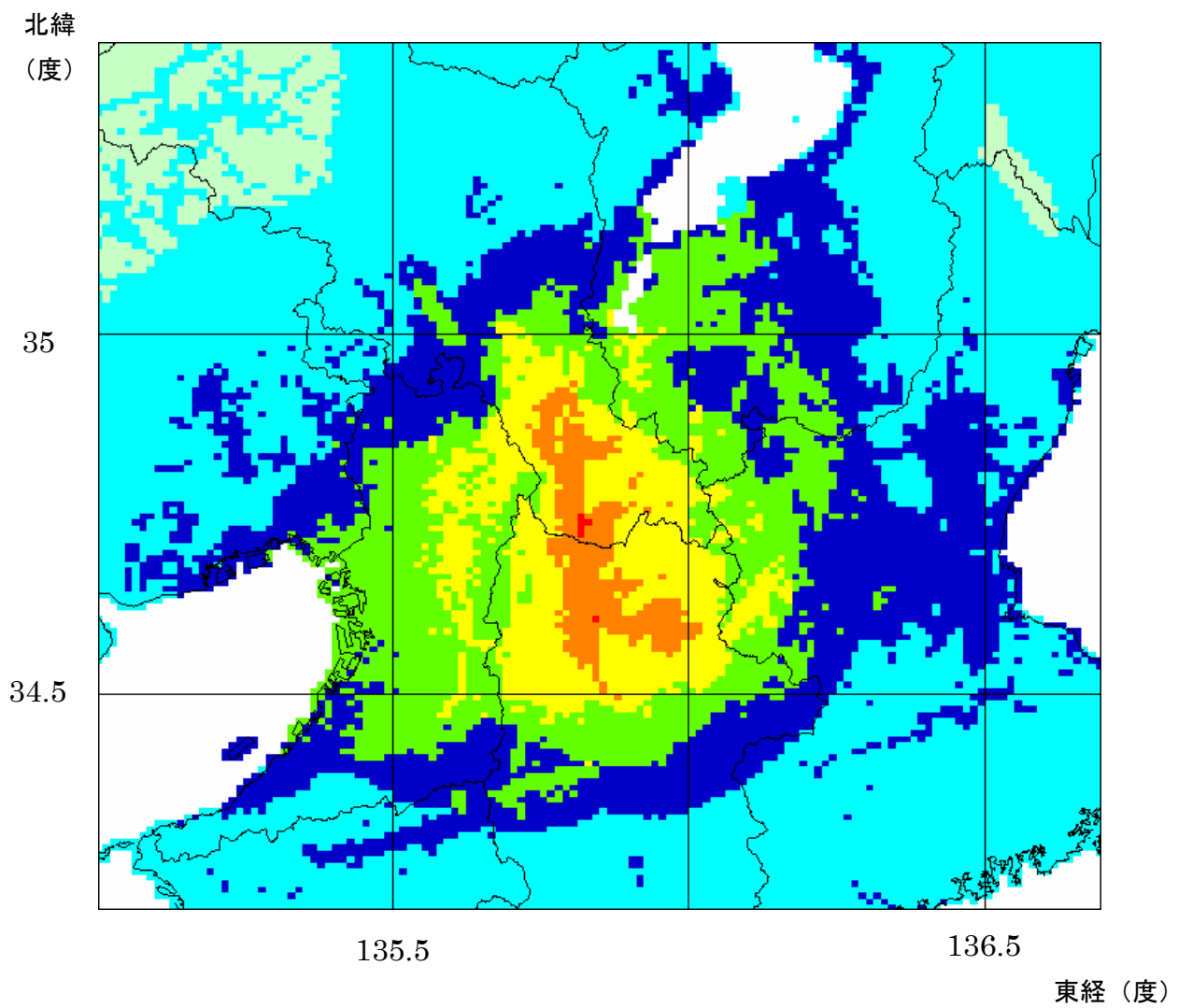
東経 (度)



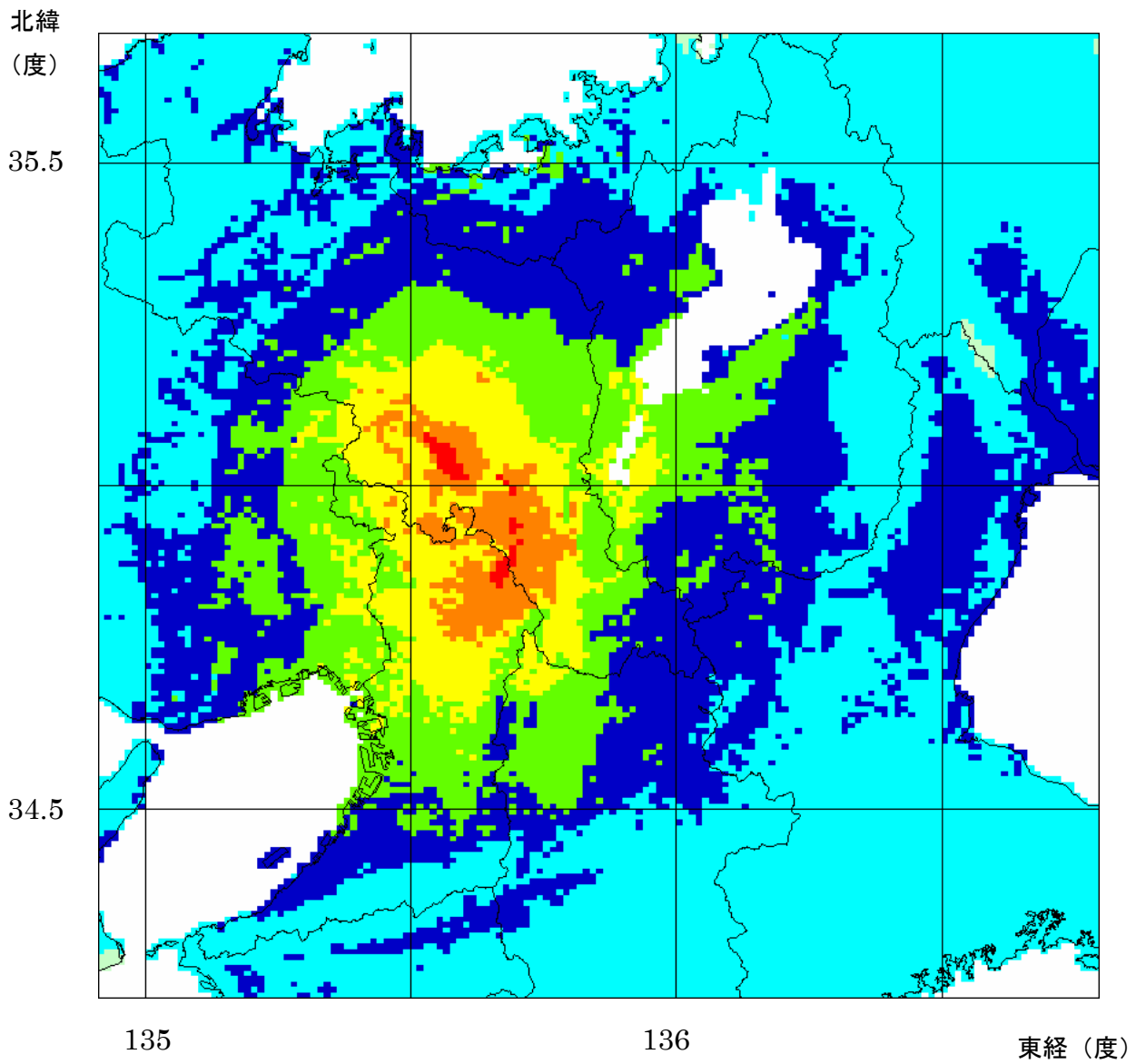
06 花折断層帯の地震 (M7.4)



07 奈良盆地東縁断層帯の地震 (M7.4)

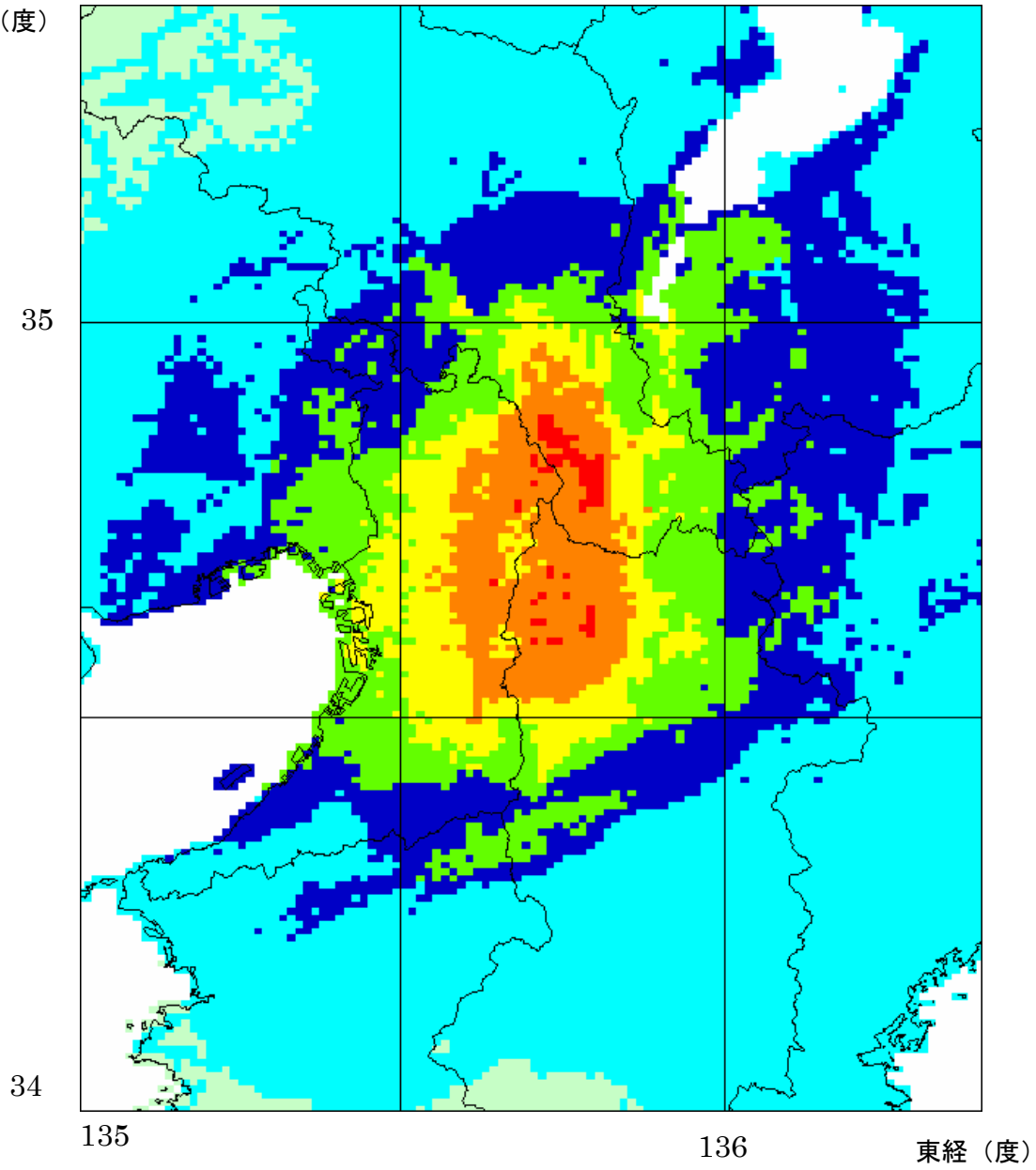


08 京都西山断層帯の地震 (M7.5)



09 生駒断層帯の地震 (M7.5)

北緯
(度)

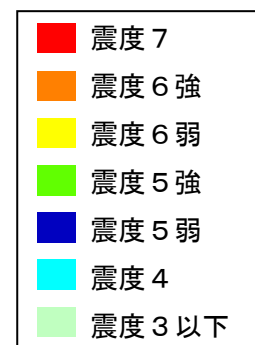


34

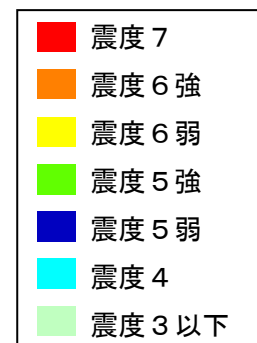
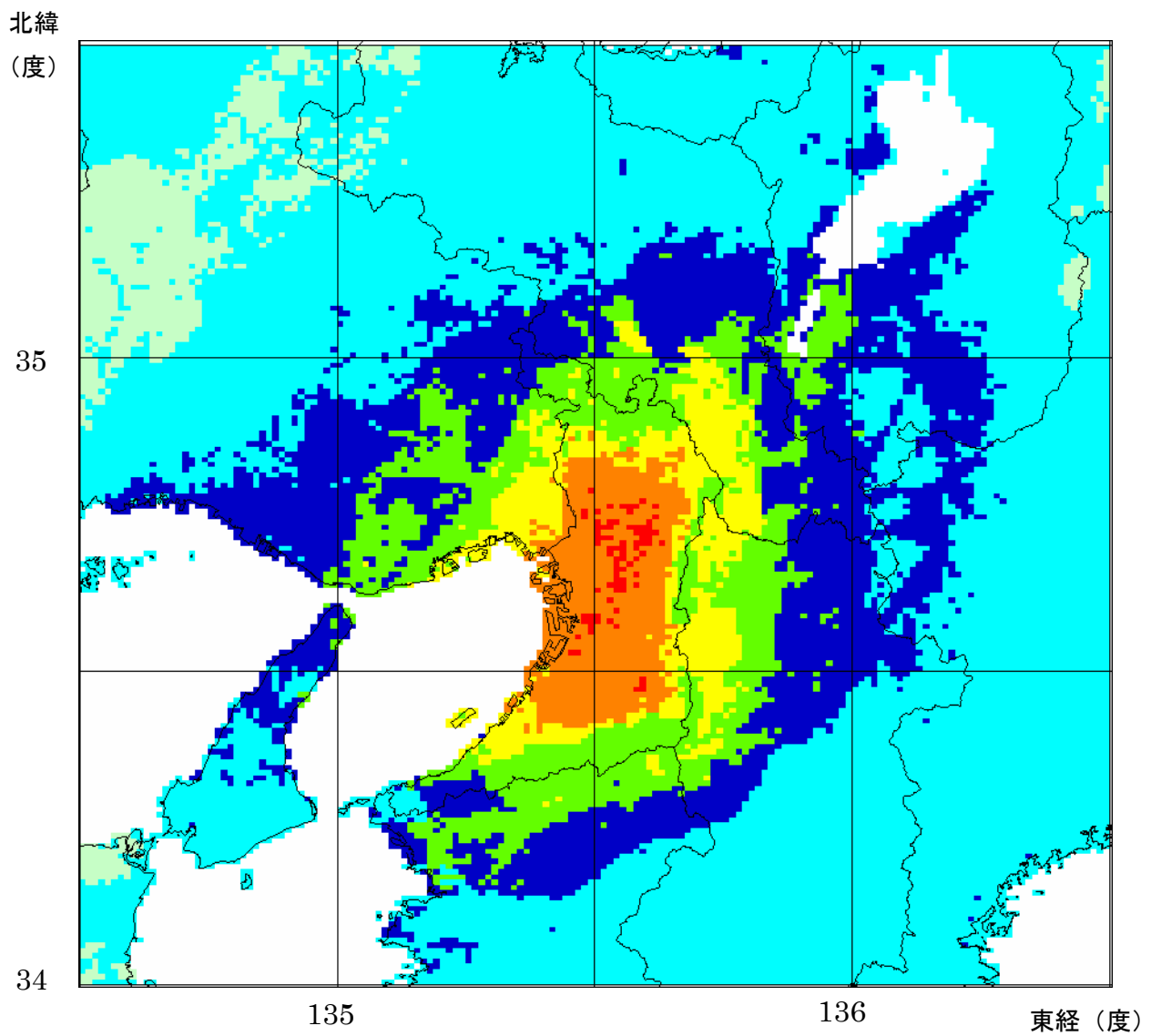
135

136

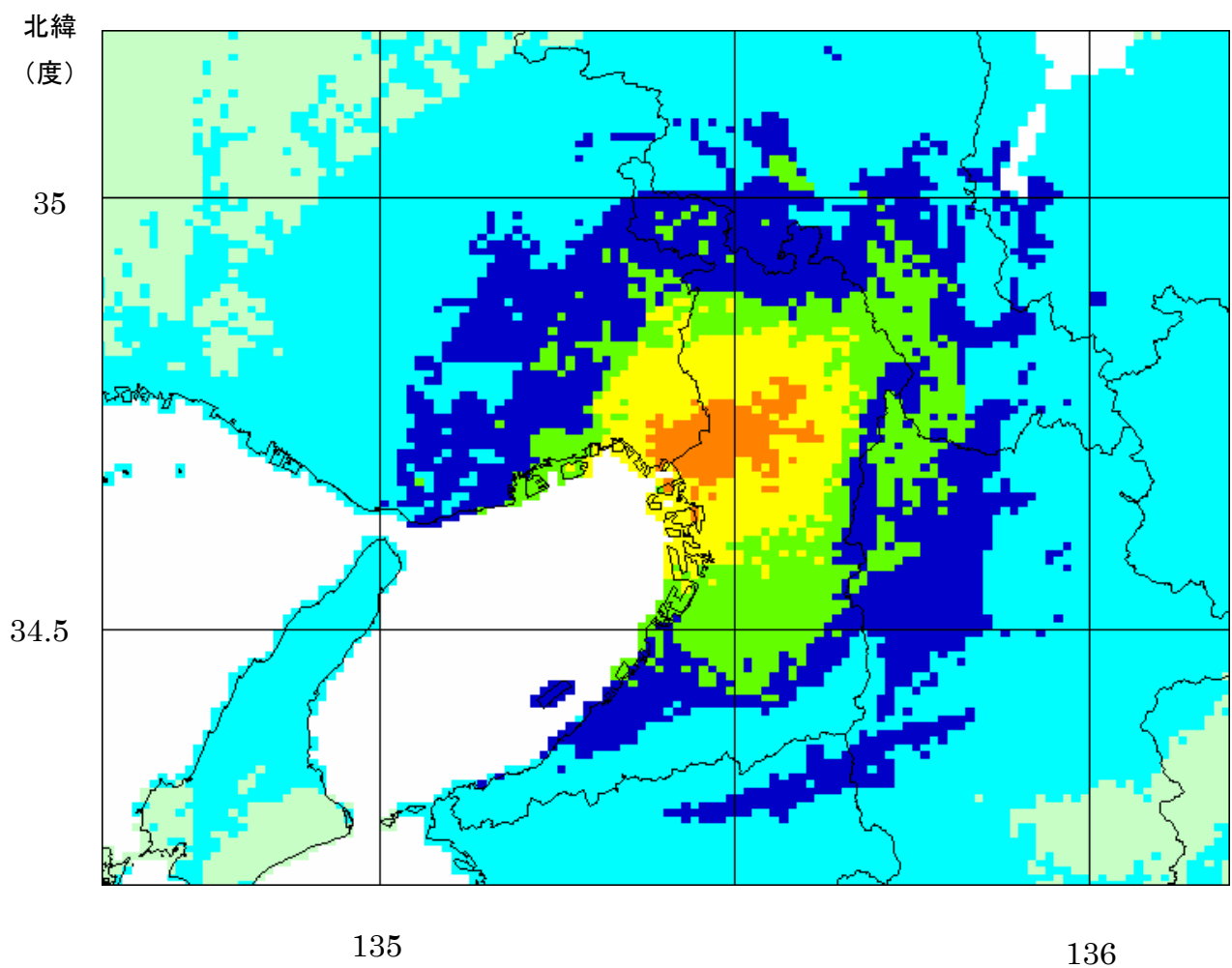
東経 (度)



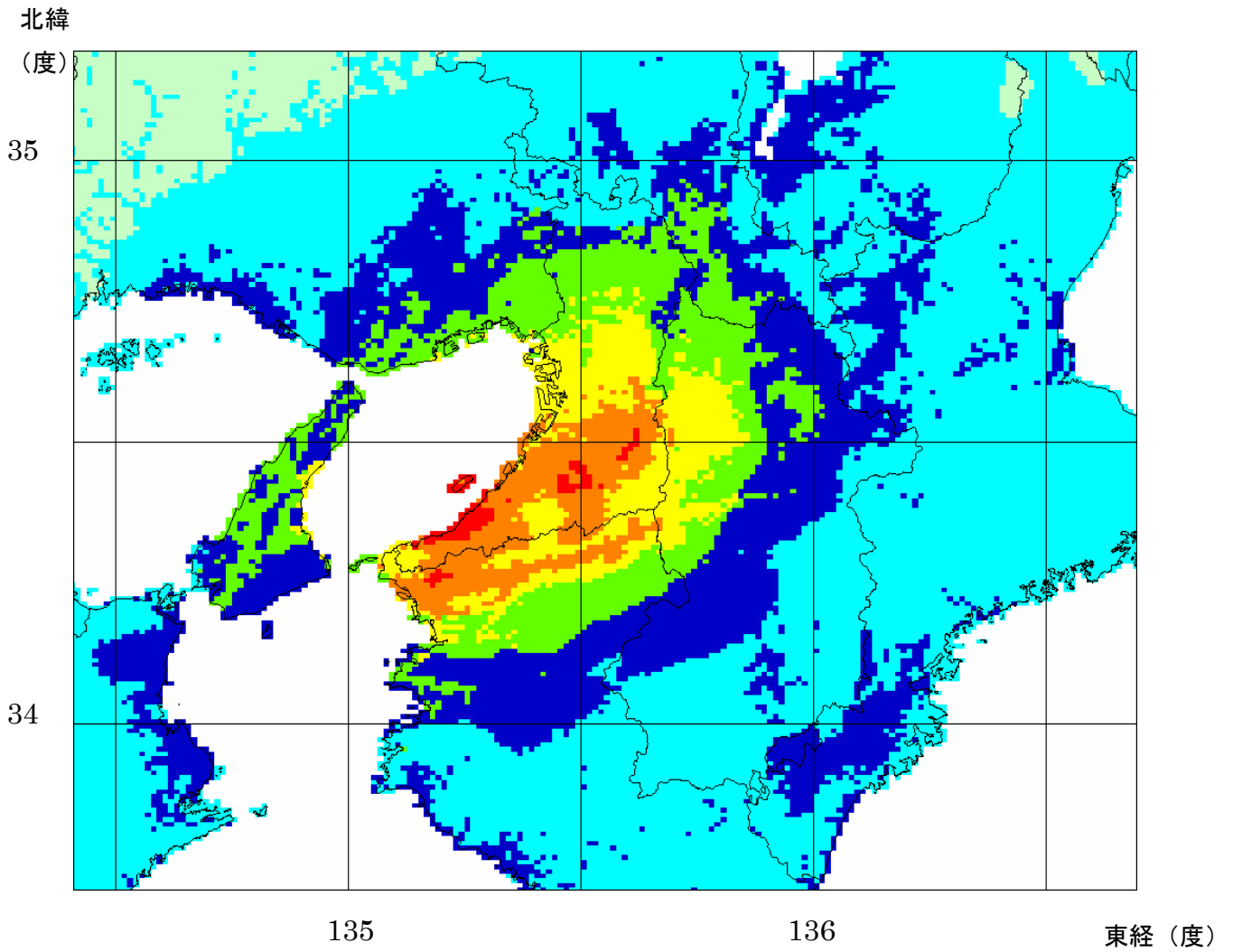
10 上町断層帯の地震 (M7.6)



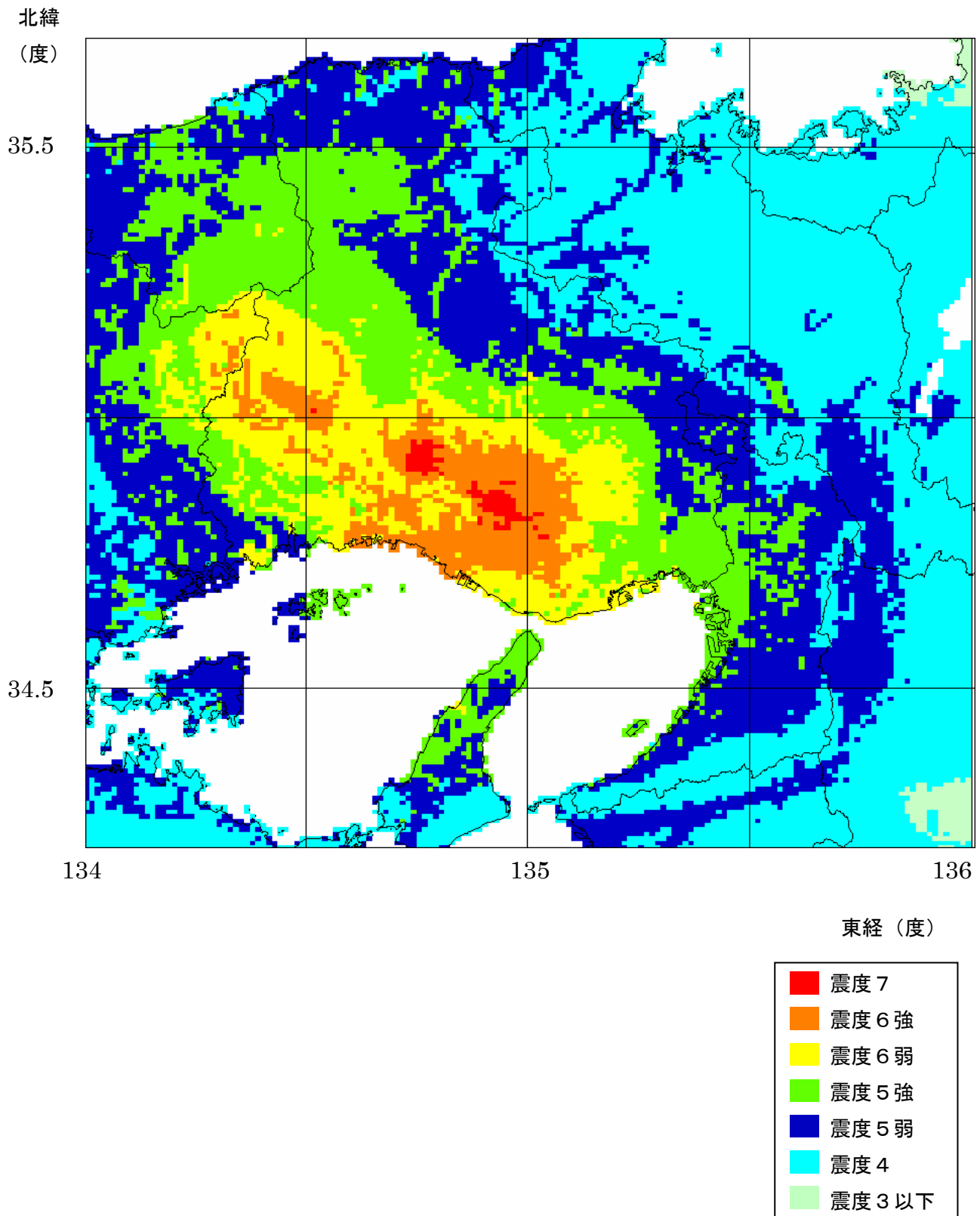
11 阪神地域直下M6.9の地震



12 中央構造線断層帯の地震 (M7.8)

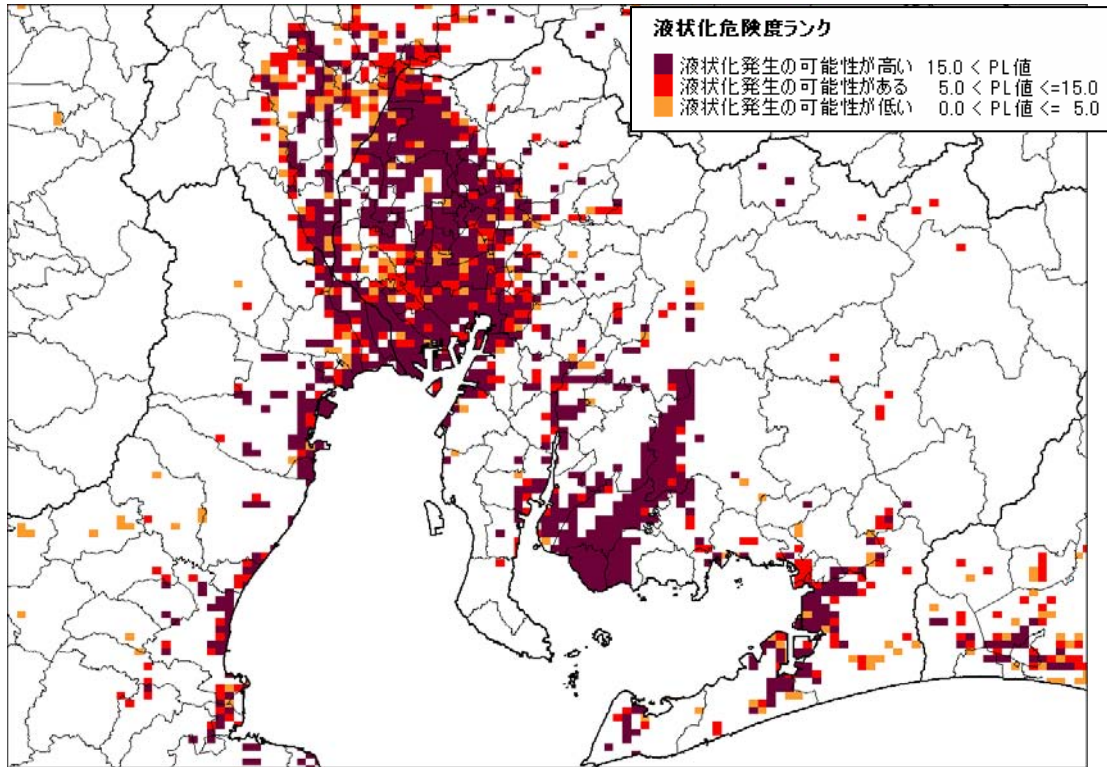


13 山崎断層帯主部の地震 (M8.0)

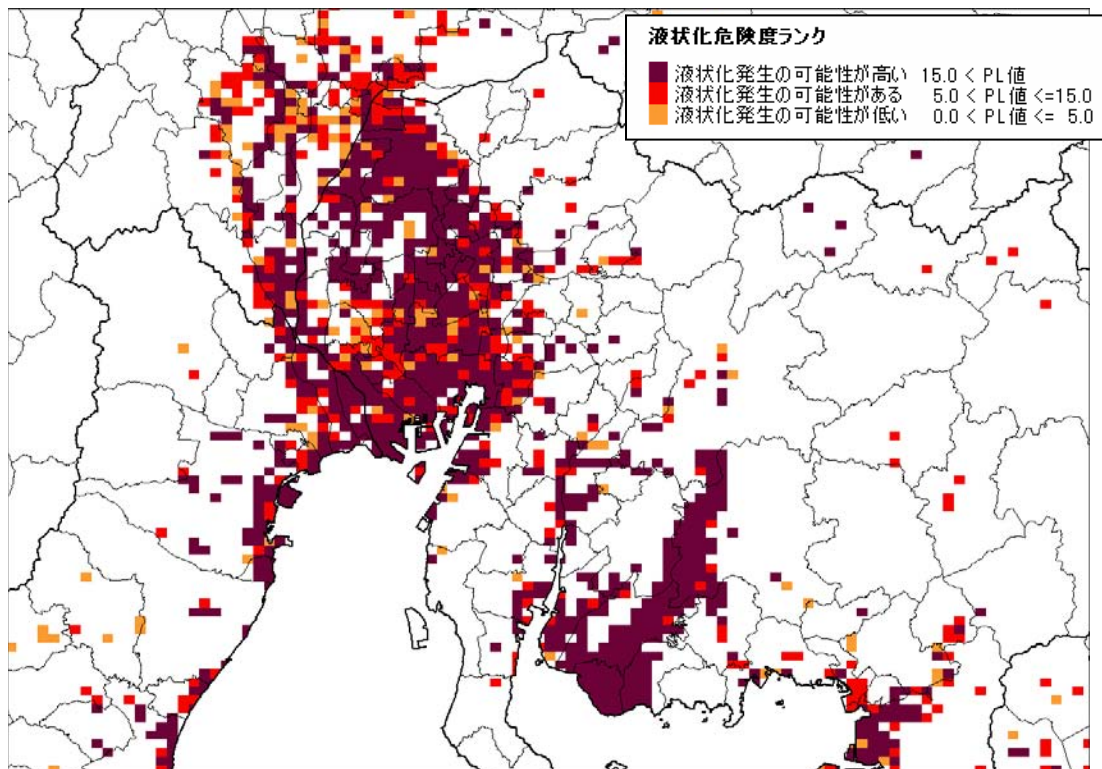


(2) 液状化危険度分布

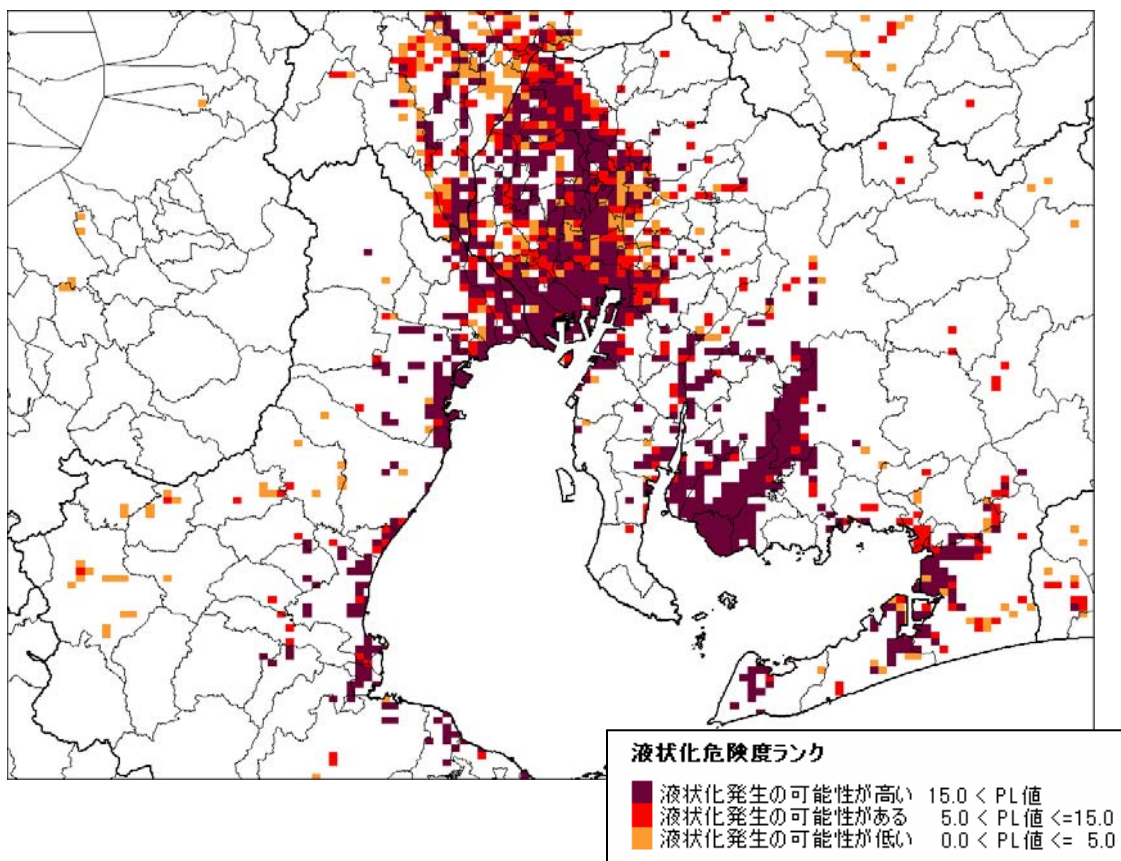
01 猿投—高浜断層帯の地震 (M7.6)



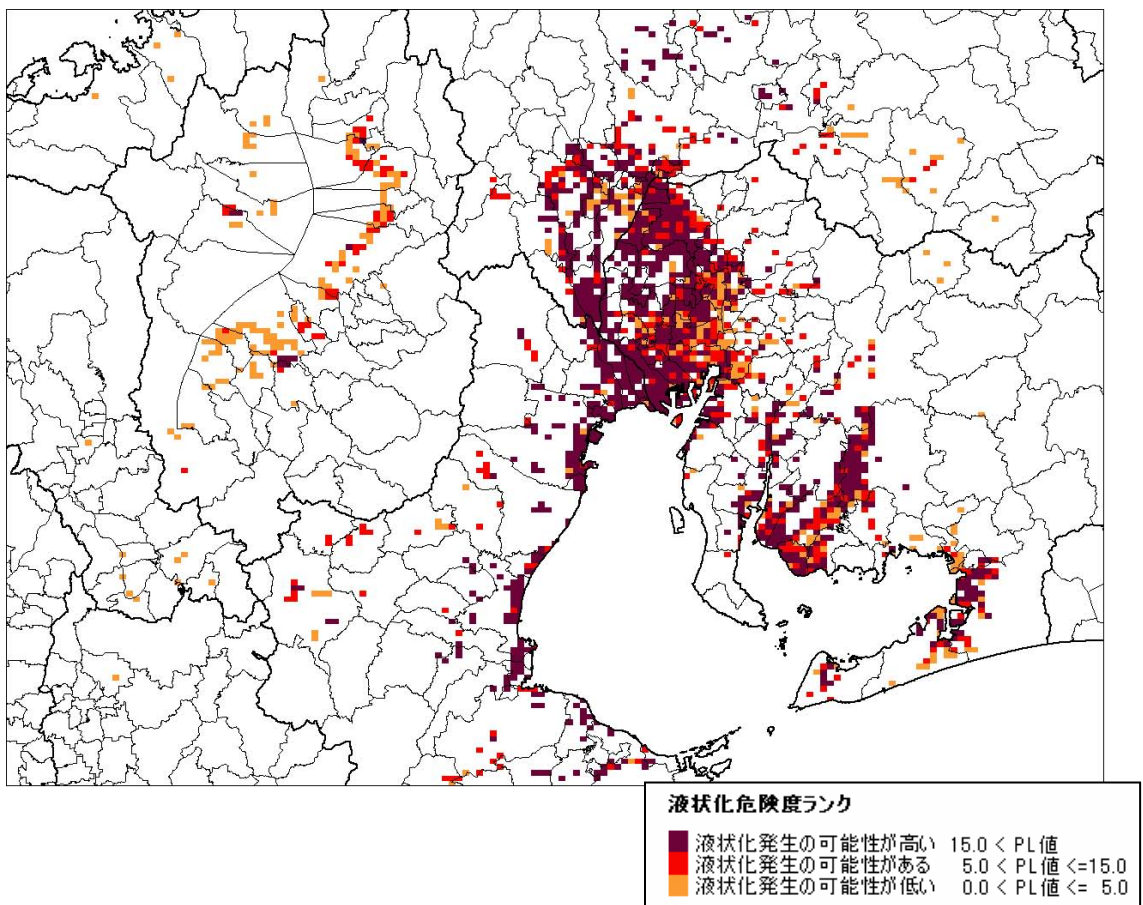
02 名古屋市直下M6.9の地震



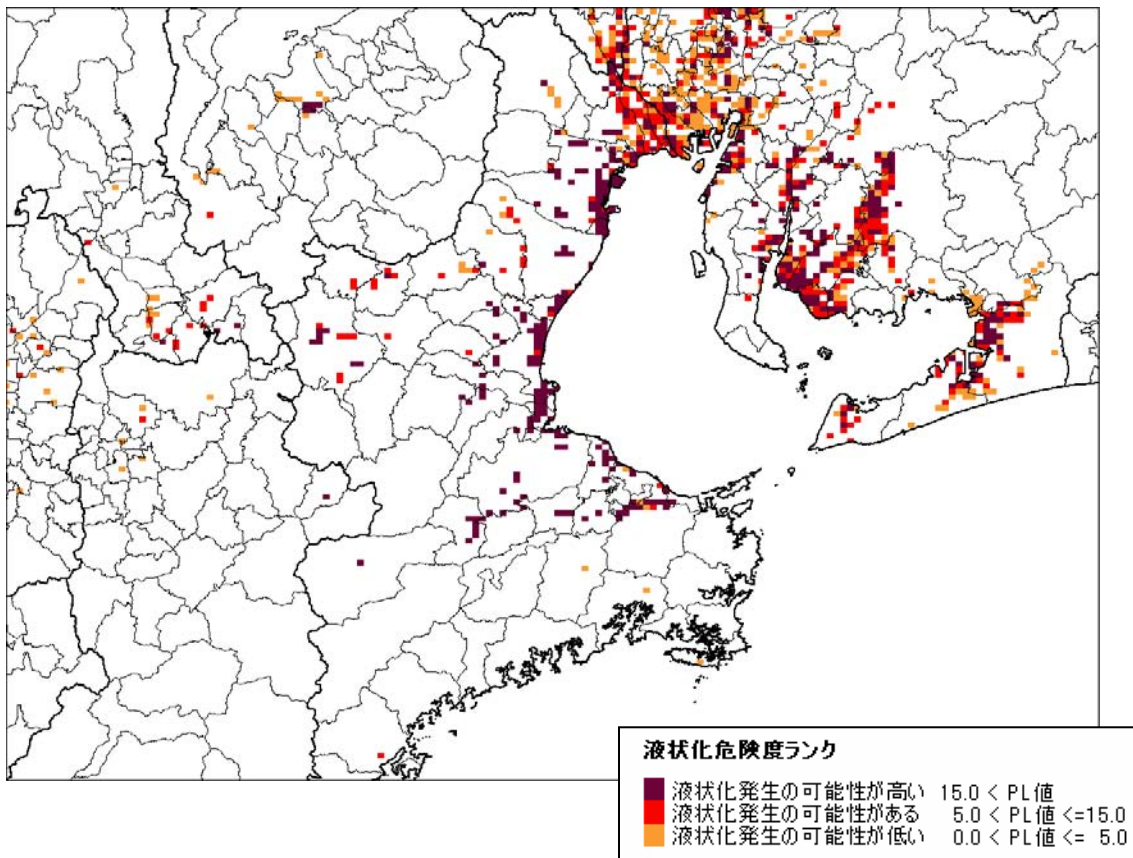
03 加木屋断層帯の地震 (M7.4)



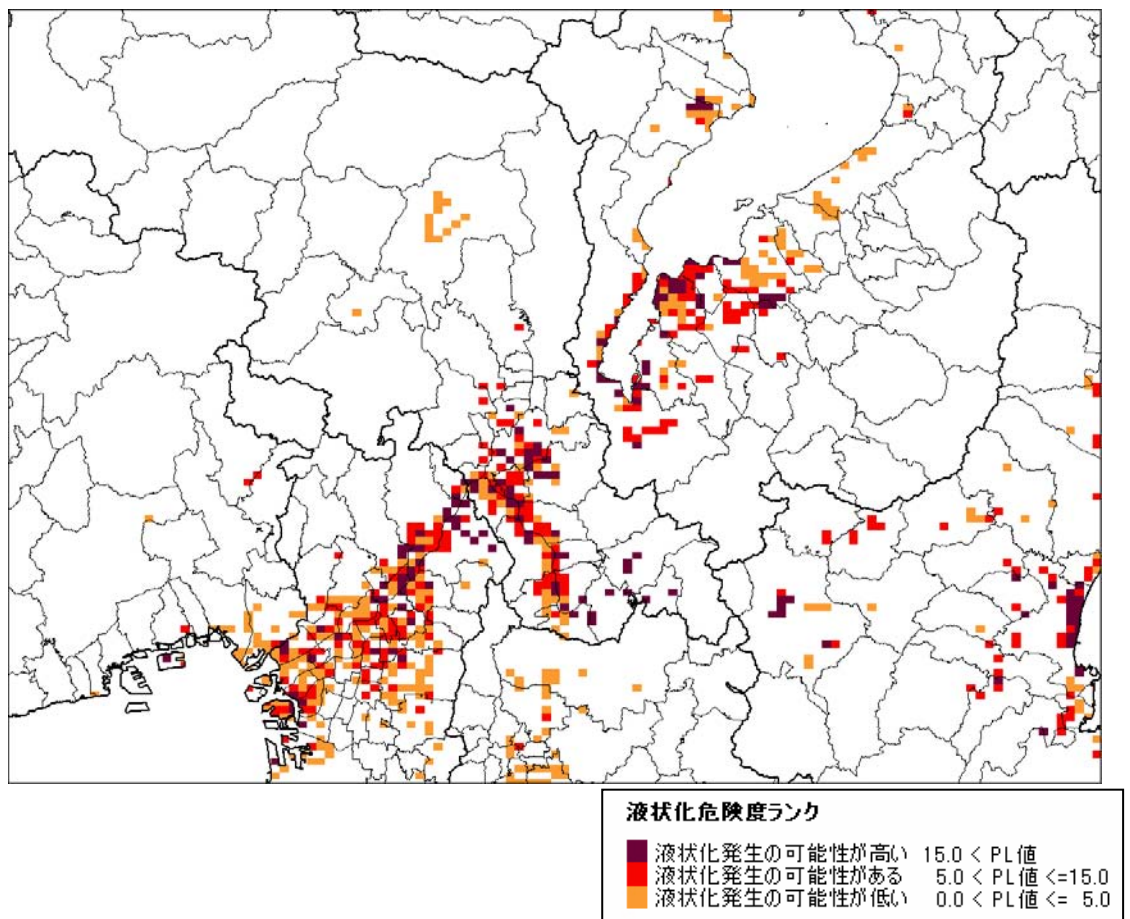
04 養老—桑名—四日市断層帯の地震 (M7.7)



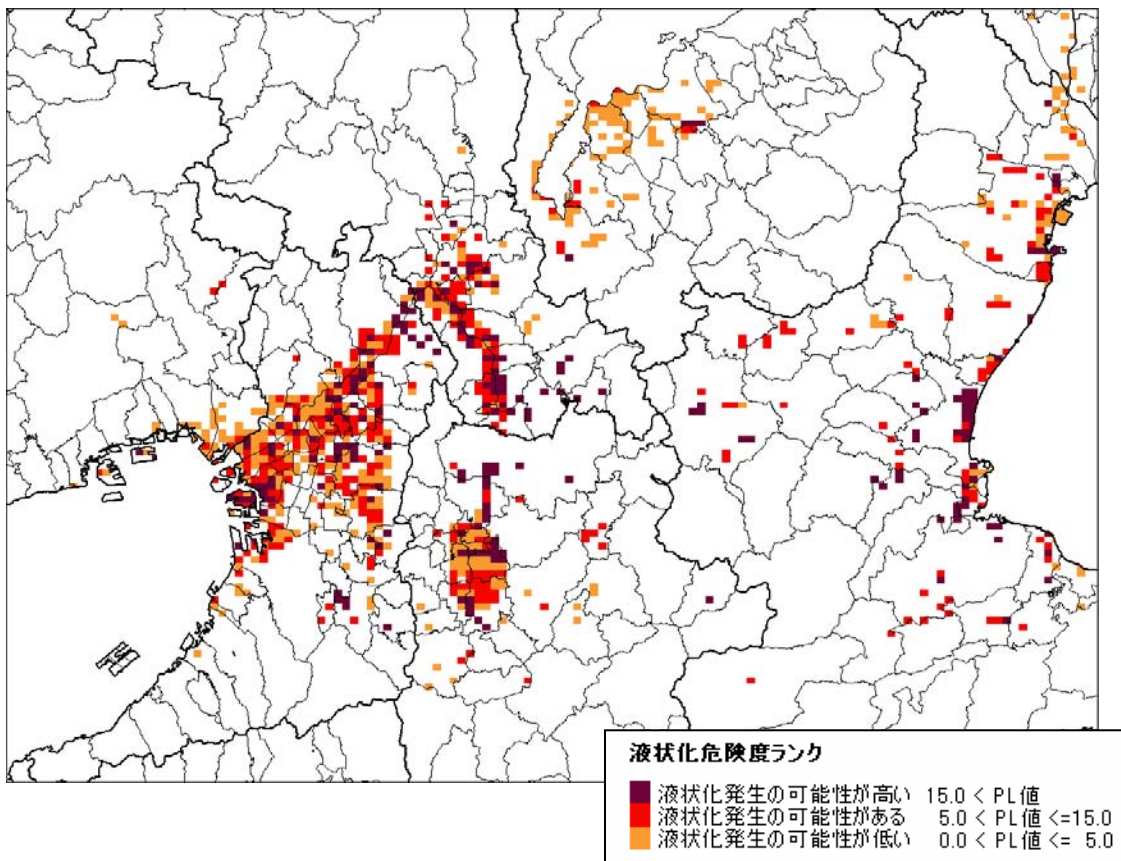
05 布引山地東縁断層帯東部の地震 (M7.6)



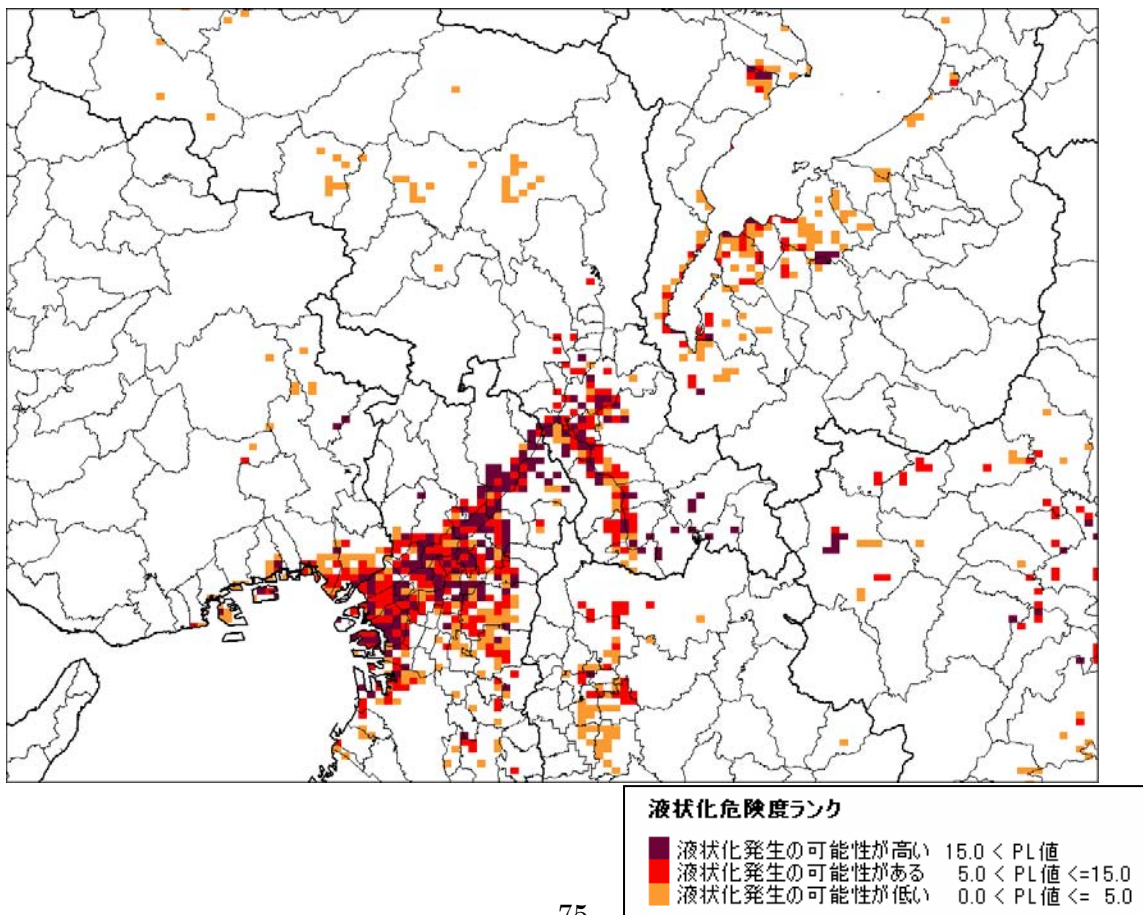
06 花折断層帯の地震 (M7.4)



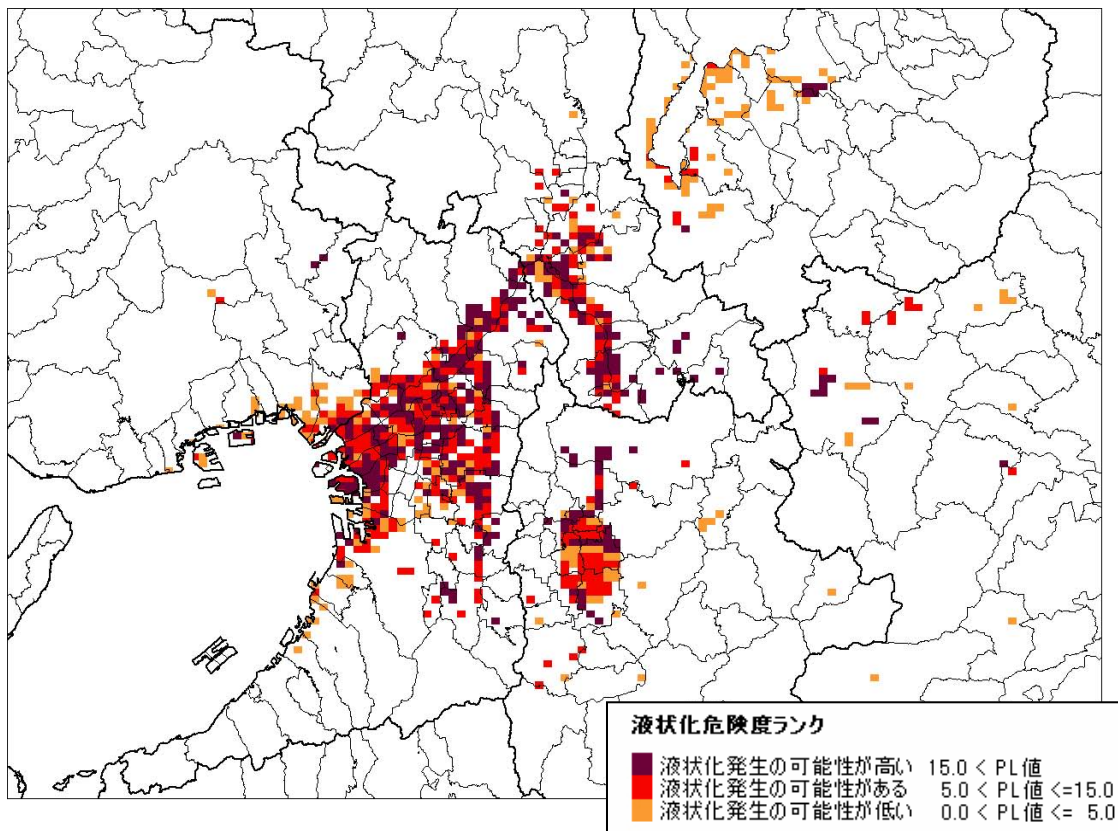
07 奈良盆地東縁断層帯の地震 (M7.4)



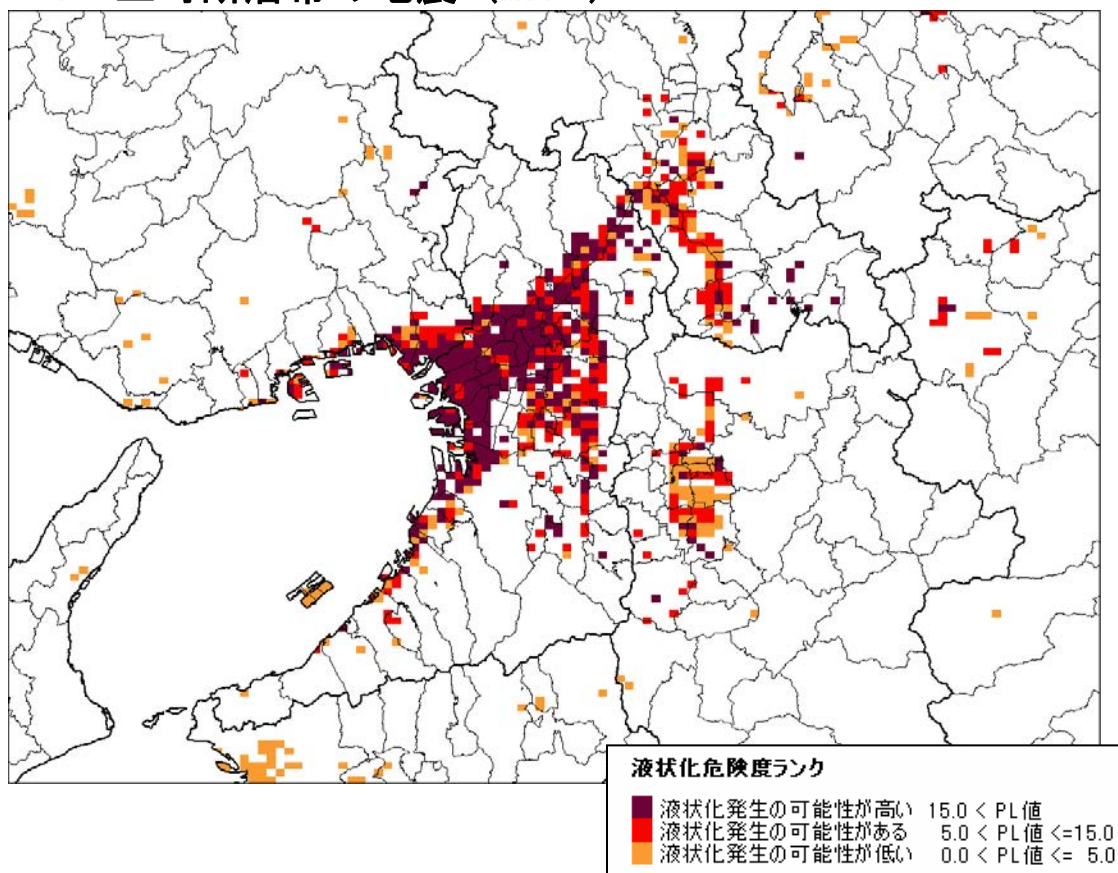
08 京都西山断層帯の地震 (M7.5)



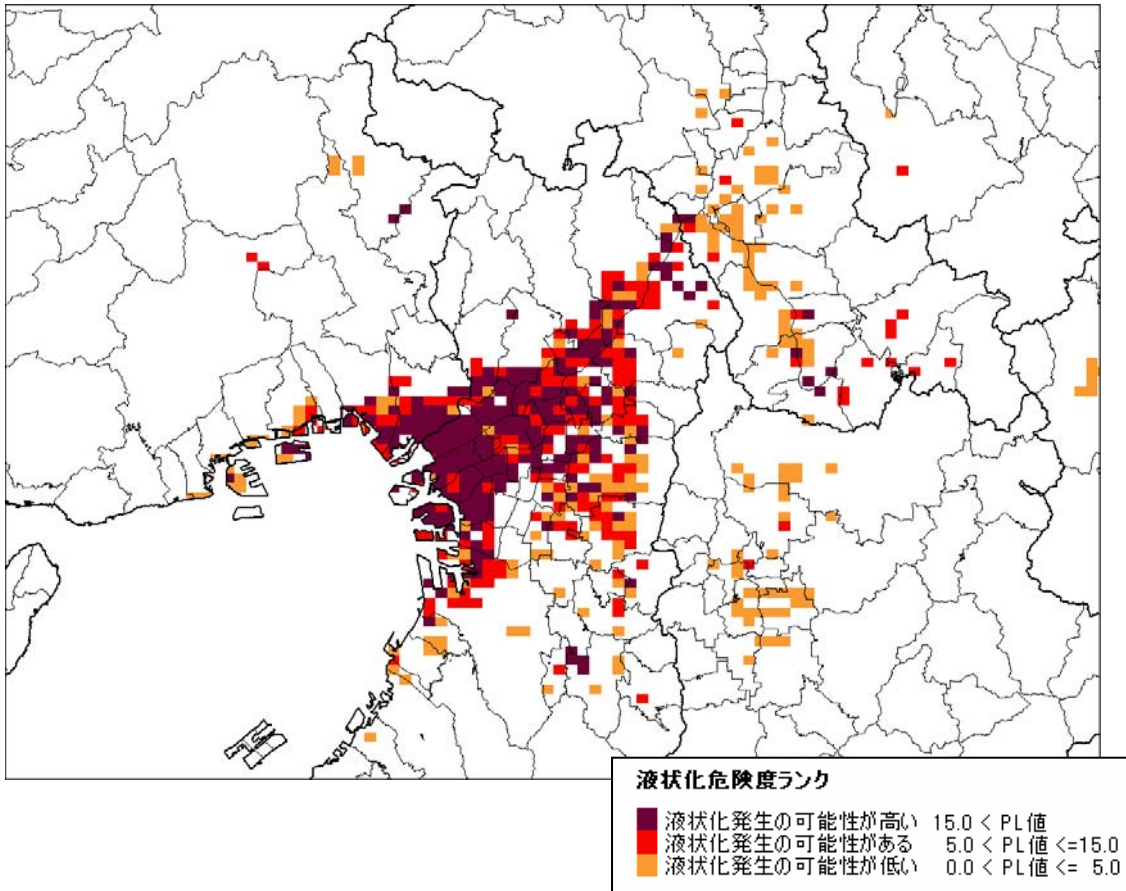
09 生駒断層帯の地震 (M7.5)



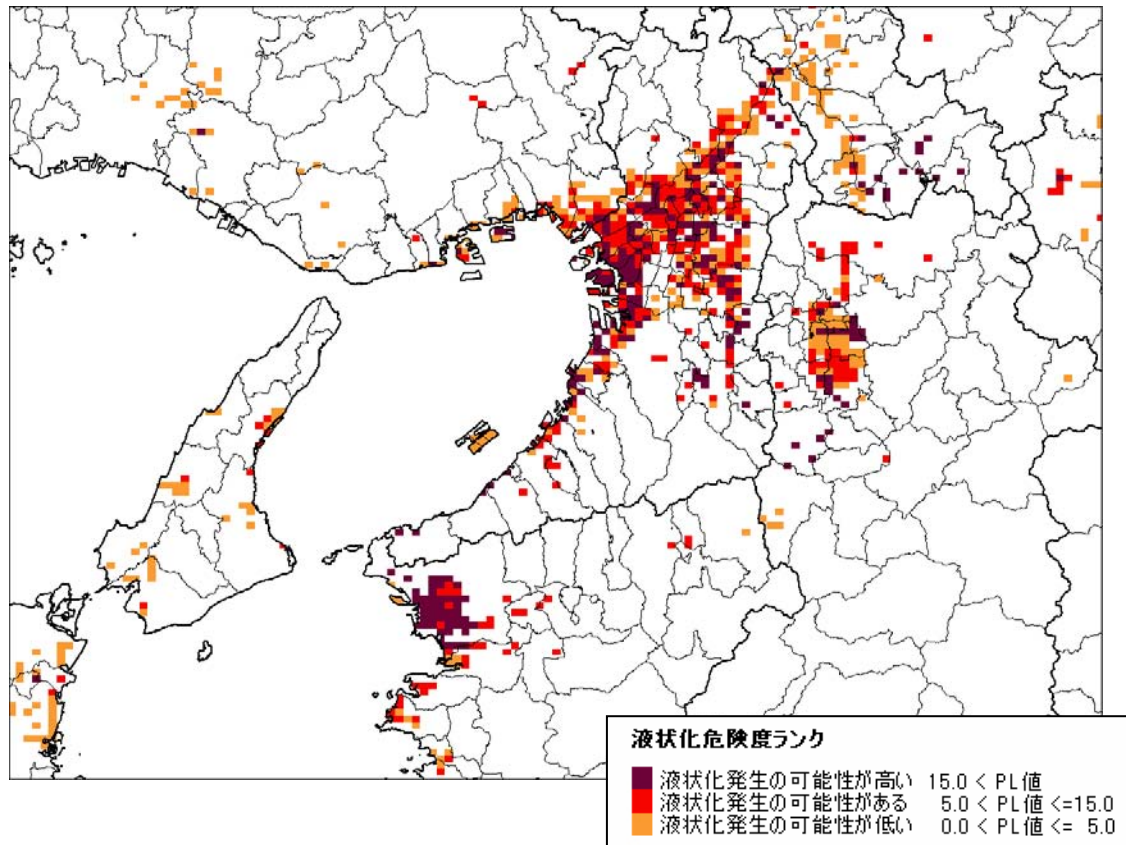
10 上町断層帯の地震 (M7.6)



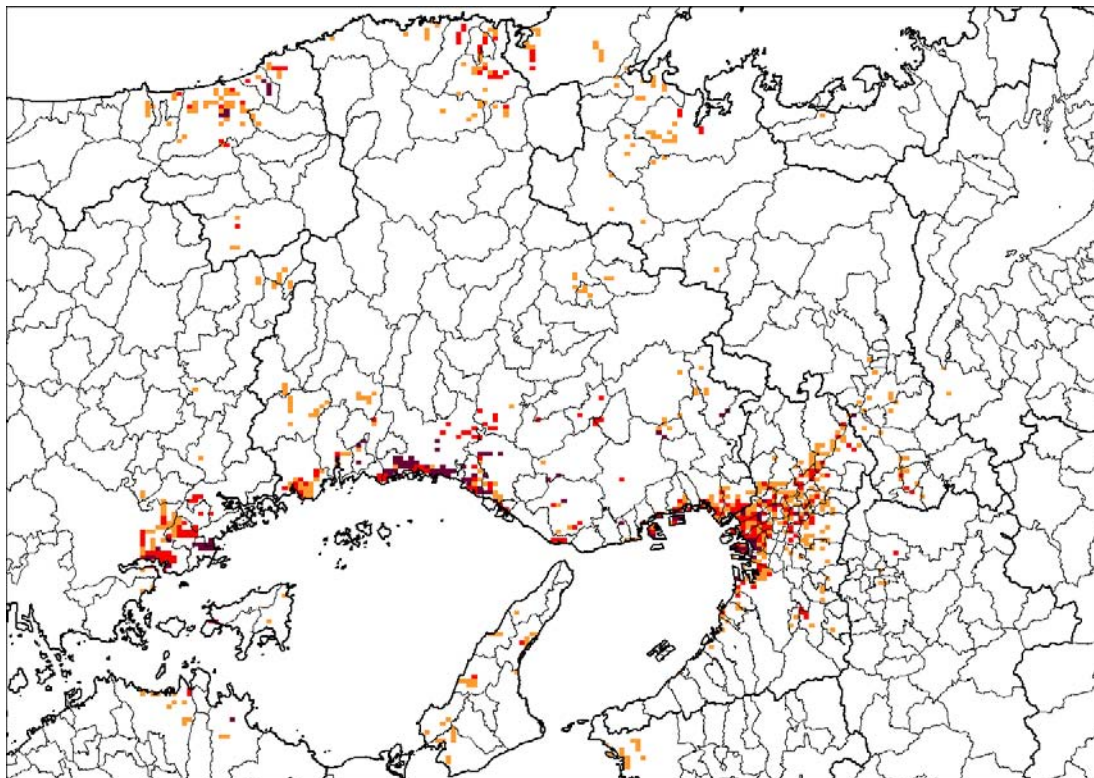
11 阪神地域直下M6.9の地震



12 中央構造線断層帯の地震 (M7.8)



13 山崎断層帯主部の地震 (M8.0)

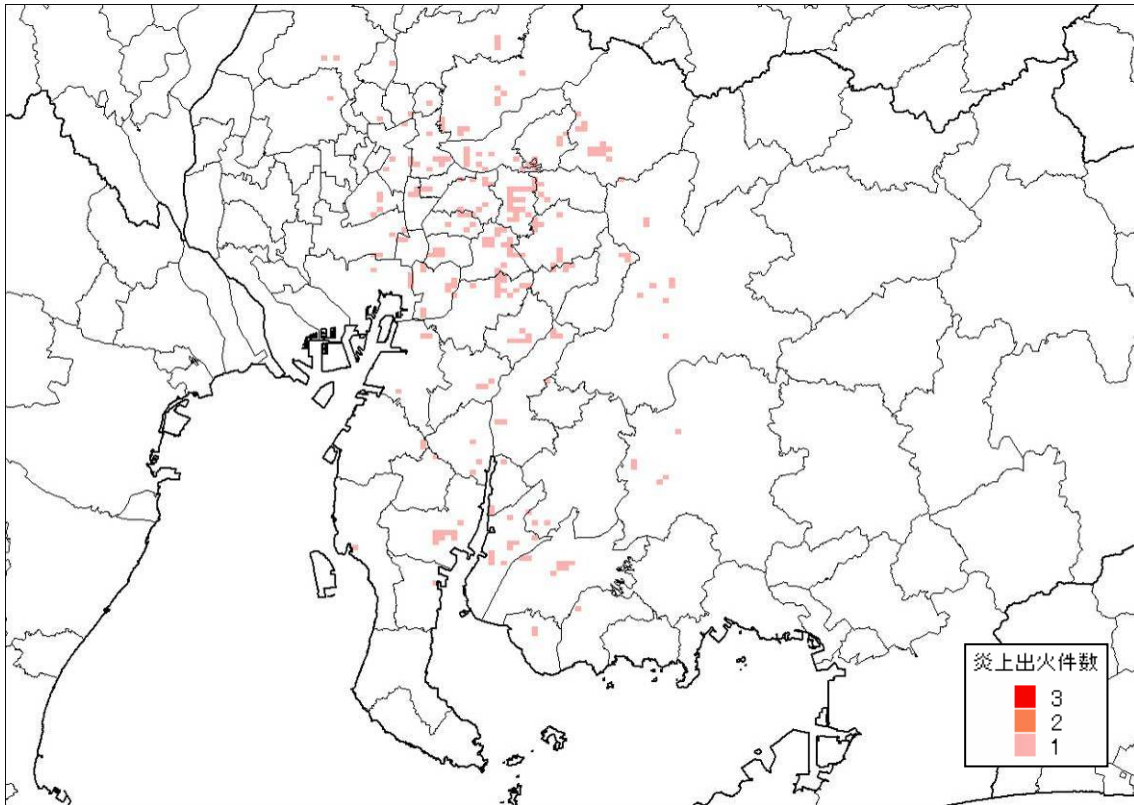


液状化危険度ランク

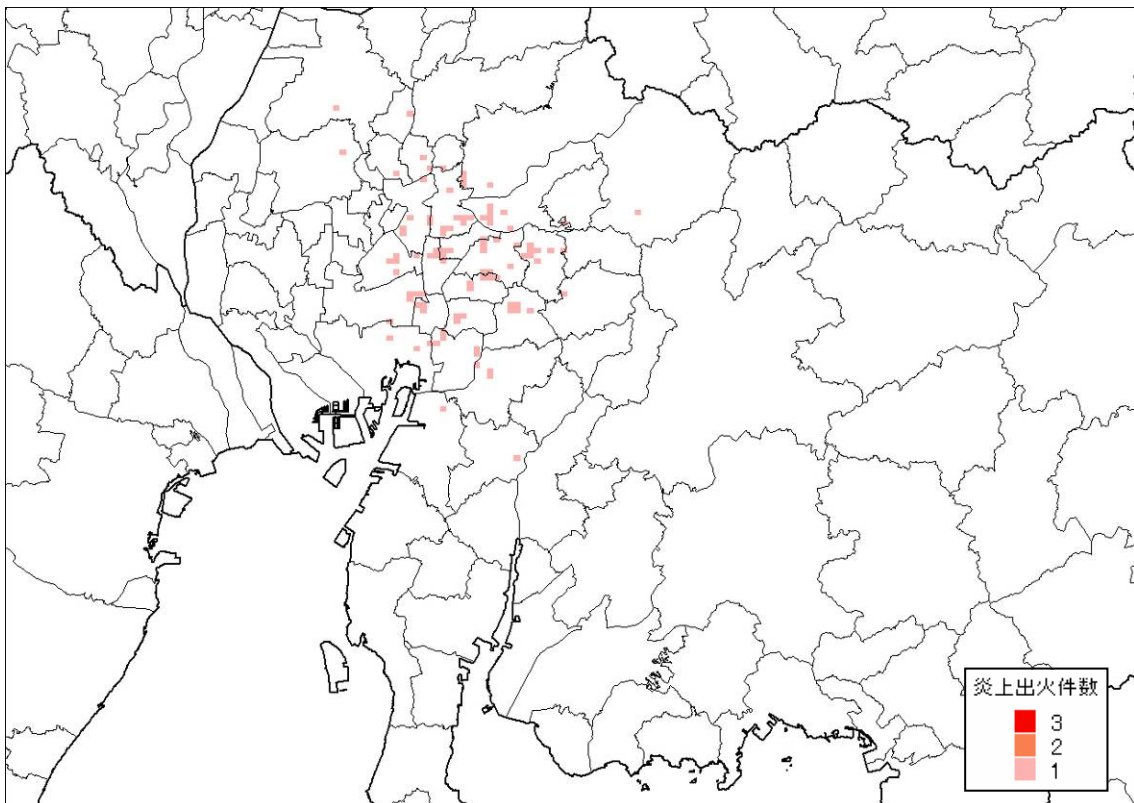
■ 液状化発生の可能性が高い	15.0 < PL値
■ 液状化発生可能性がある	5.0 < PL値 ≤ 15.0
■ 液状化発生の可能性が低い	0.0 < PL値 ≤ 5.0

(3) 炎上出火件数分布

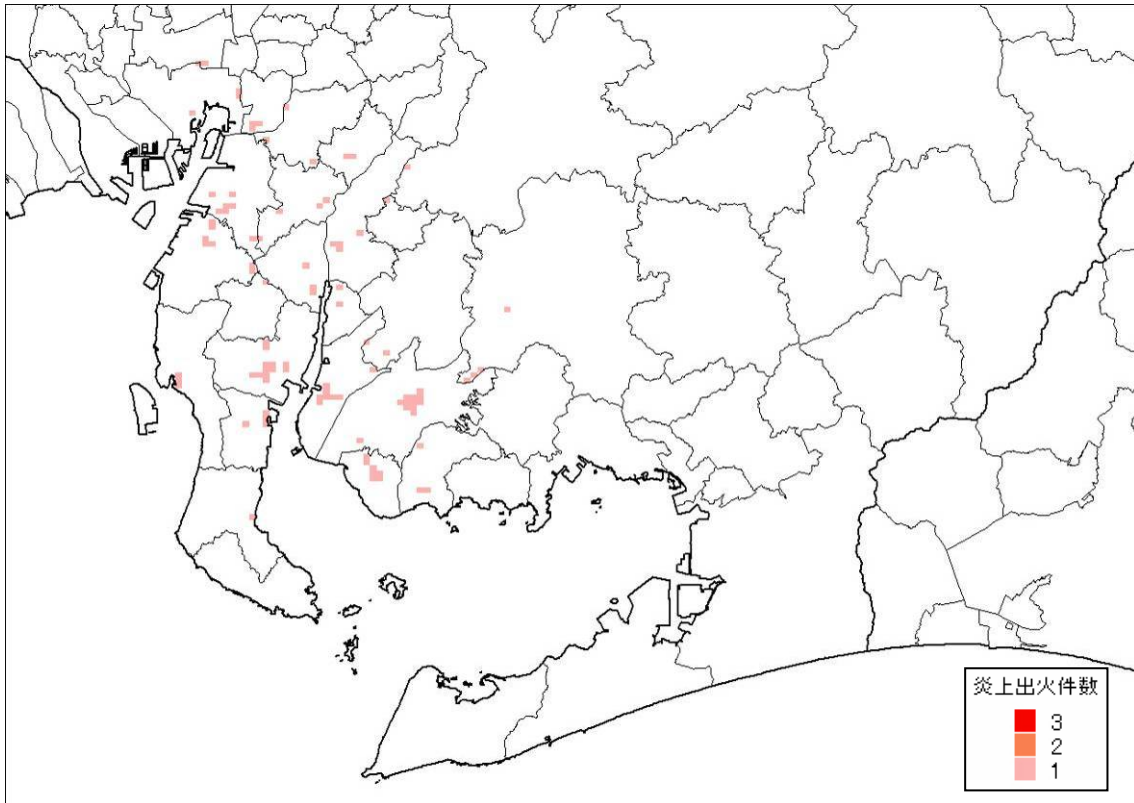
01 猿投－高浜断層帯の地震 (M7.6)



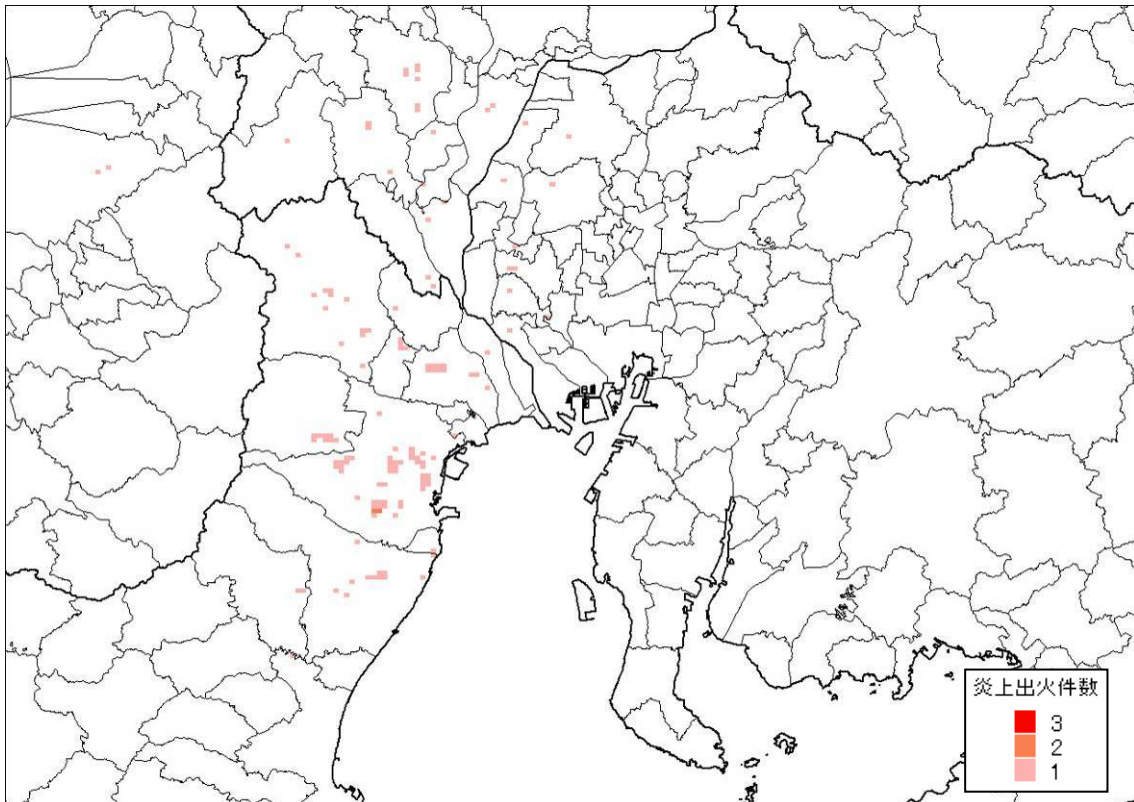
02 名古屋市直下M6.9の地震



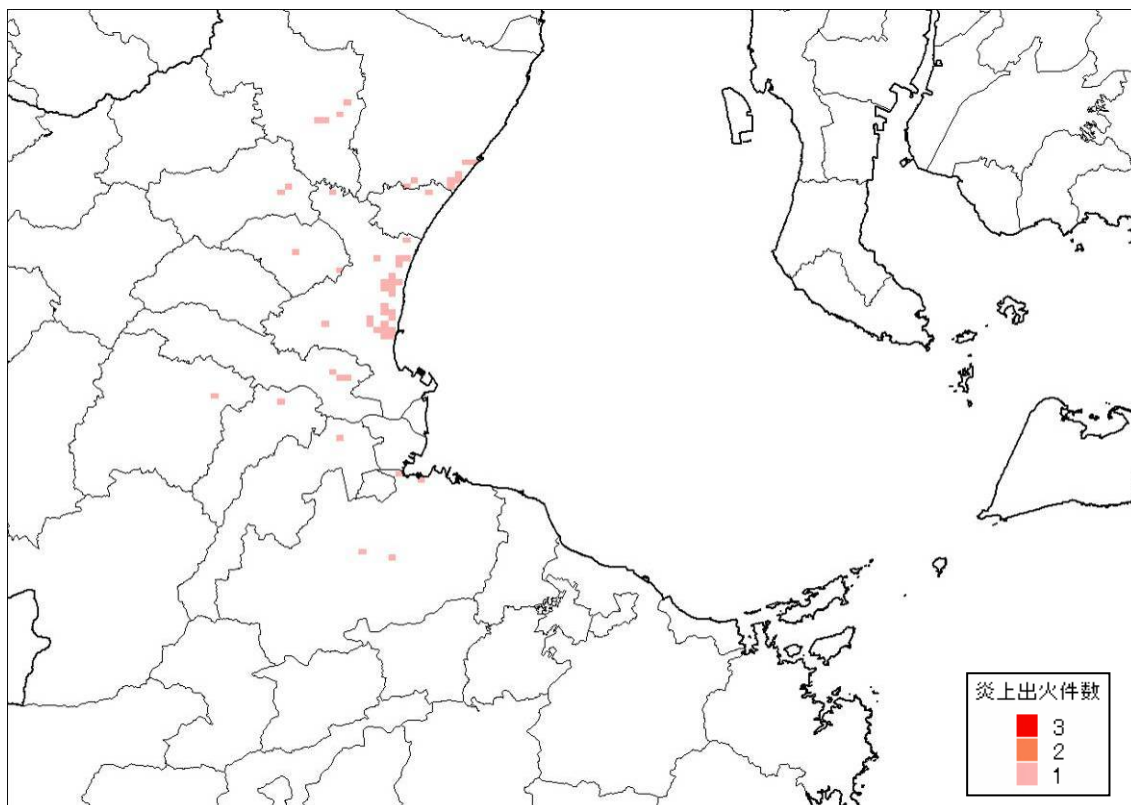
03 加木屋断層帯の地震 (M7.4)



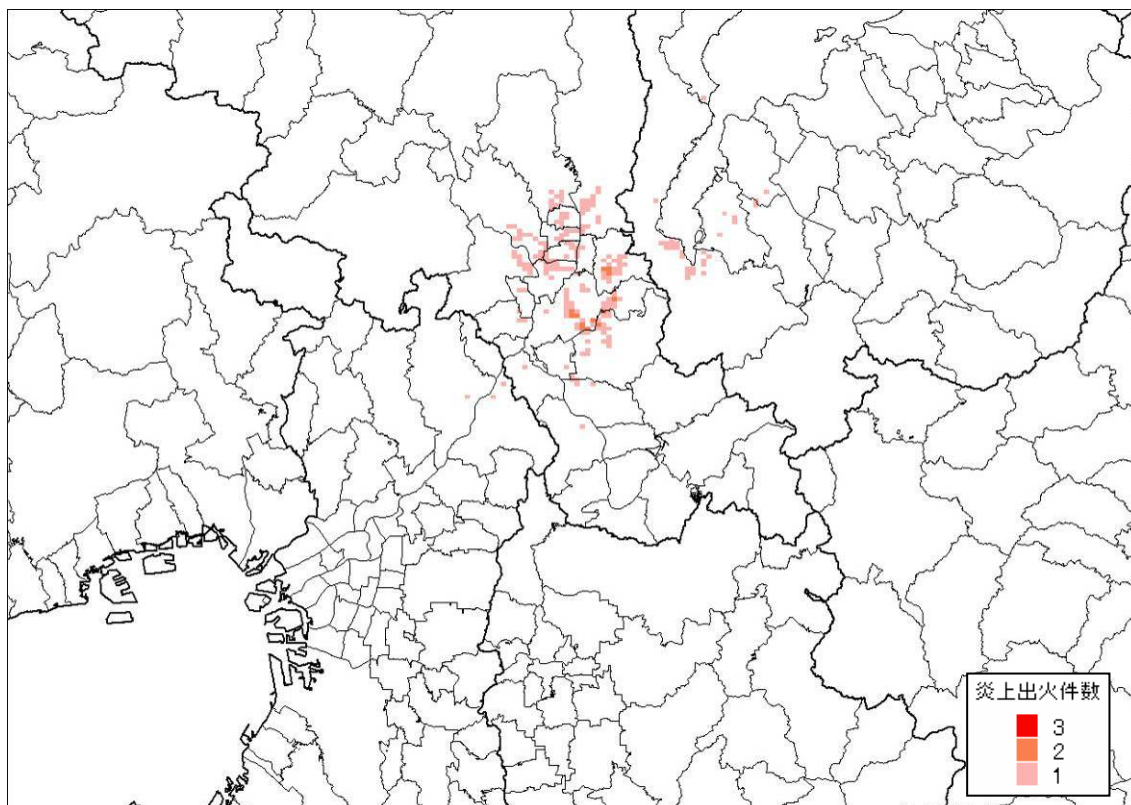
04 養老-桑名-四日市断層帯の地震 (M7.7)



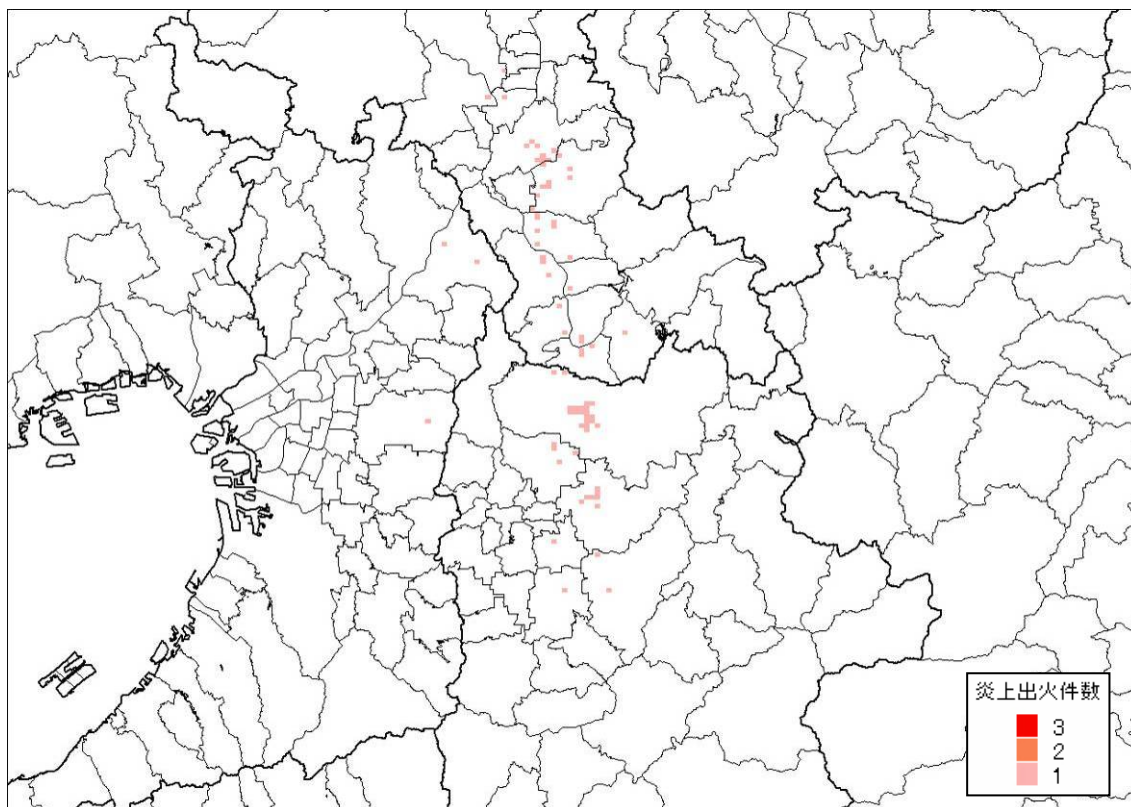
05 布引山地東縁断層帯東部の地震 (M7.6)



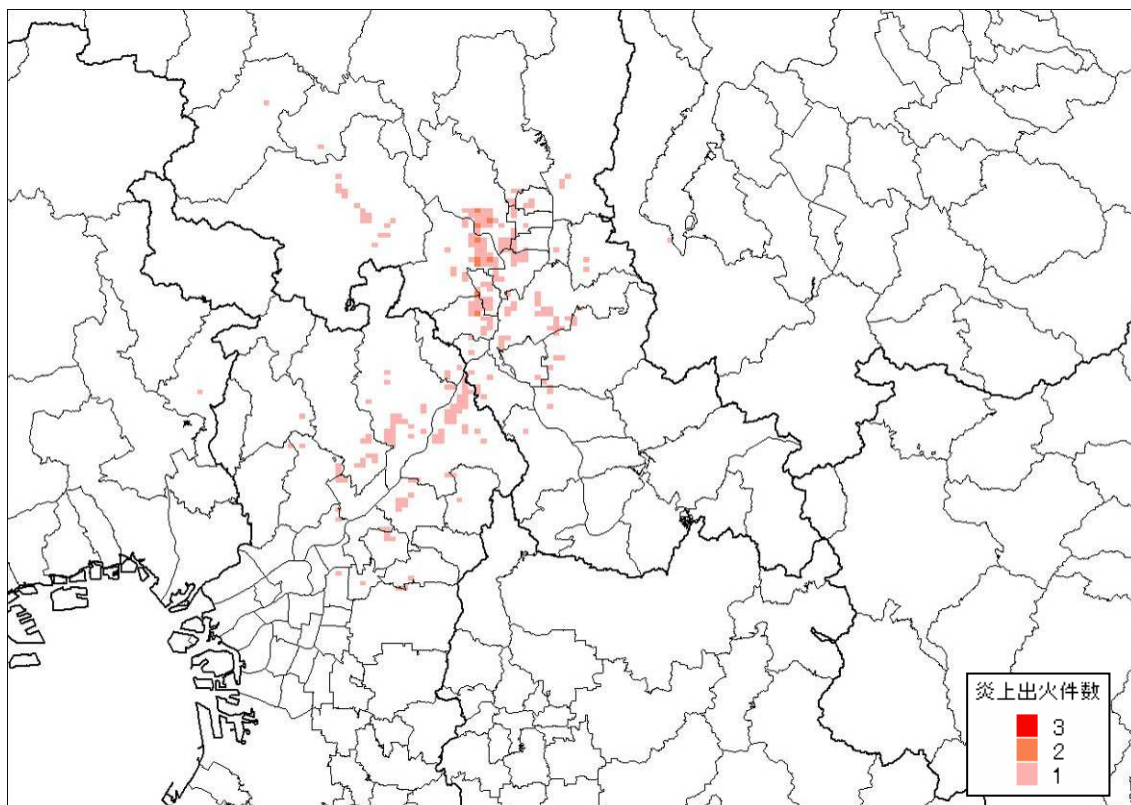
06 花折断層帯の地震 (M7.4)



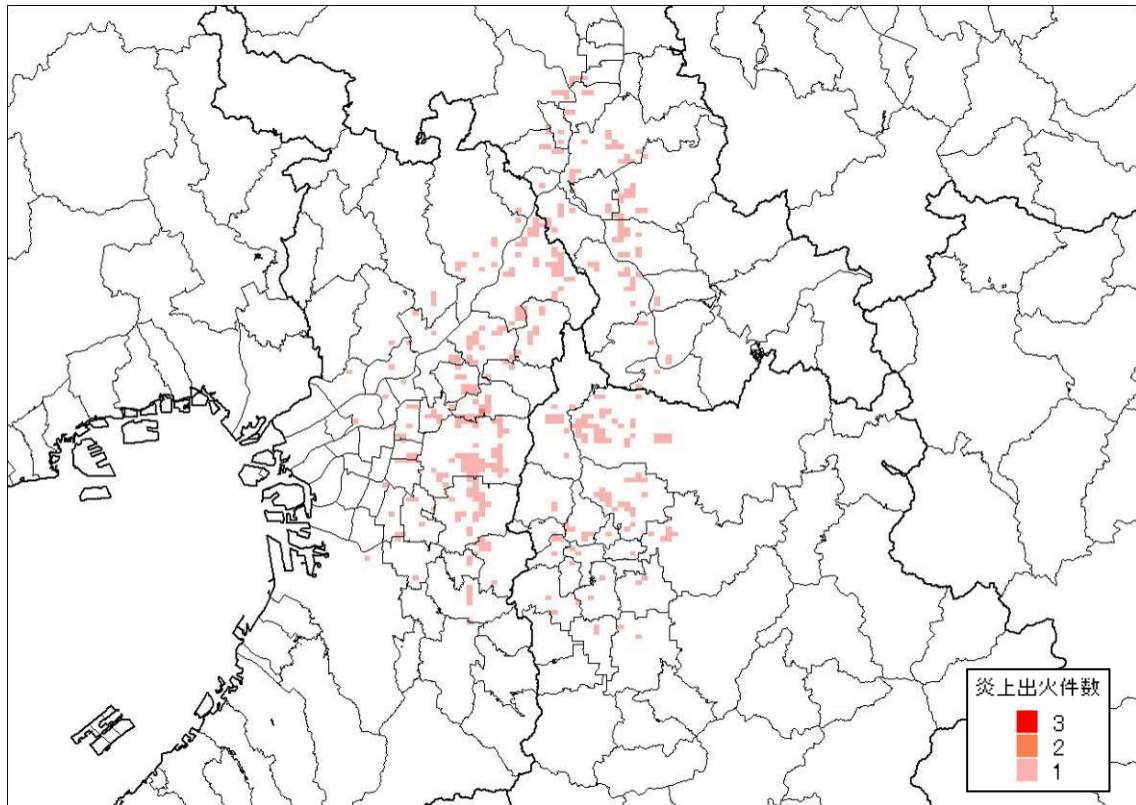
07 奈良盆地東縁断層帯の地震 (M7.4)



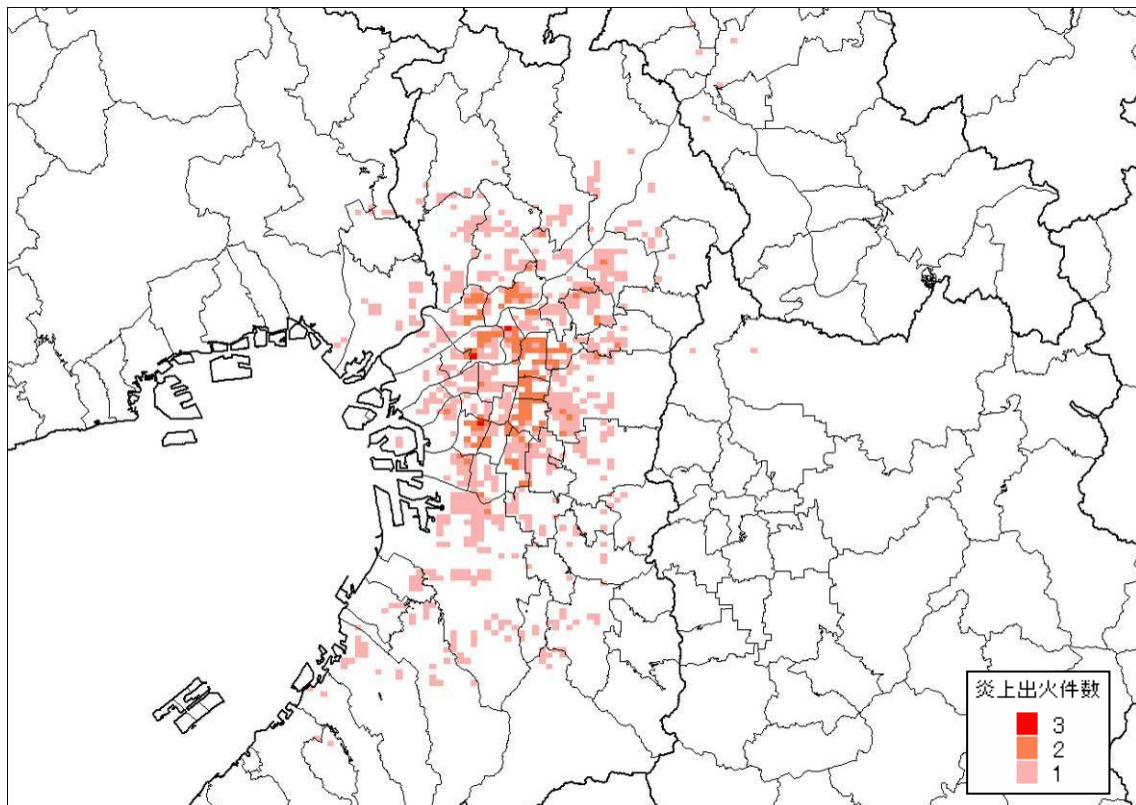
08 京都西山断層帯の地震 (M7.5)



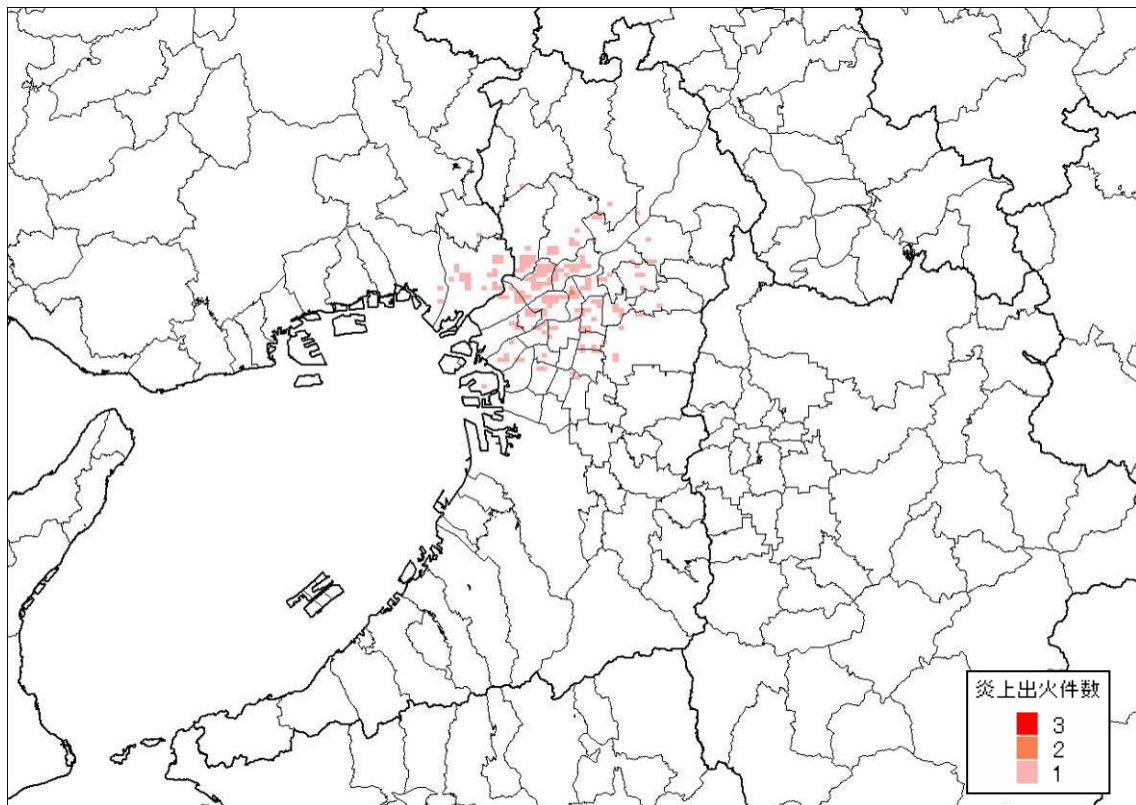
09 生駒断層帯の地震 (M7.5)



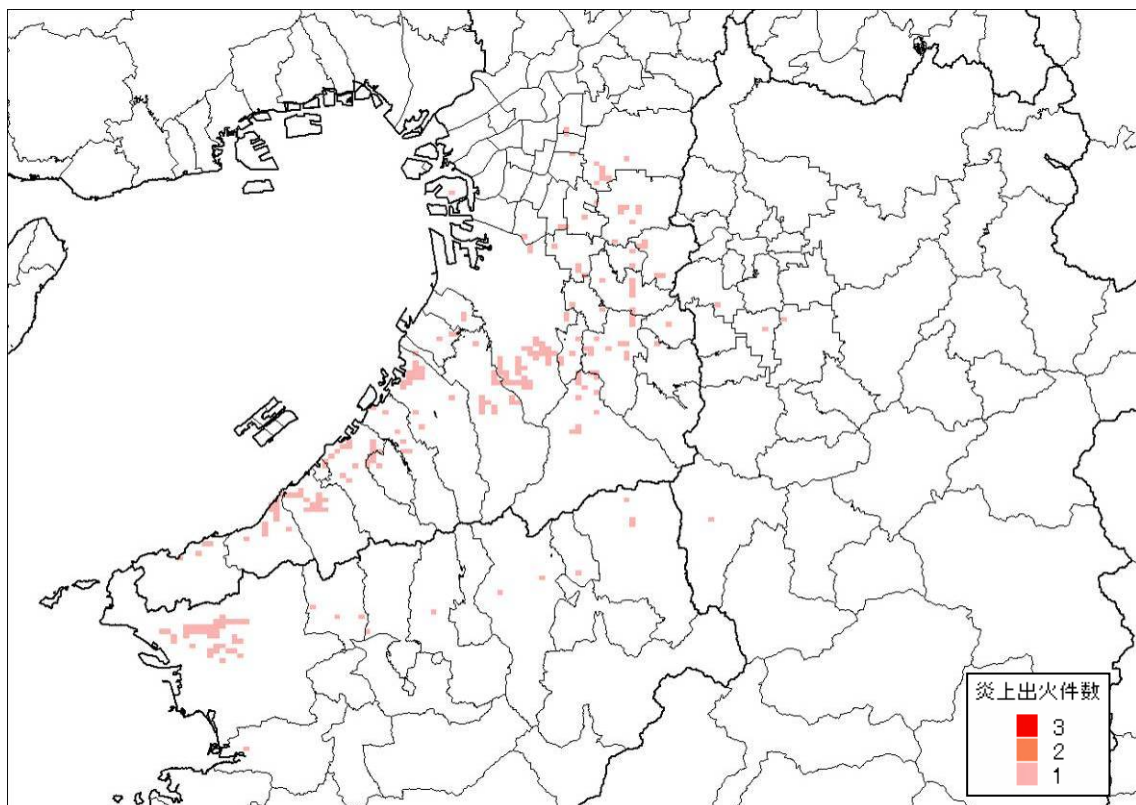
10 上町断層帯の地震 (M7.6)



11 阪神地域直下M6.9の地震



12 中央構造線断層帯の地震 (M7.8)



13 山崎断層帯主部の地震 (M8.0)

