

## 海外における浸水防止対策例

～地下鉄駅等の出入口における洪水流入防止対策の参考として～

# 英国における市街地の水防対策例

浸水深2.5m程度までであれば、この写真のような防御方法により地下鉄出入口前面を半円形等に囲む方法も考えられる。



英国の例: Pitt (2008) Learning lessons from the 2007 floods, pp.104 より  
[http://www.cabinetoffice.gov.uk/thepittreview/final\\_report.aspx](http://www.cabinetoffice.gov.uk/thepittreview/final_report.aspx)  
©Crown Copyright

組み立て途中の様子(別の場所のもの)



©Crown Copyright (Defra): 2007

- (上) Bowker (2007) Flood Resistance and Resilience Solutions: an R&D Scoping Study, Joint Defra/EA Flood and Coastal Erosion Risk Management R&D Programme, pp.33
- (下) Wade, et.al.(2007) Sustainable Flood and Coastal Erosion Management Part2: Case Studies Report, R&D Technical Report FD/TR2, Joint Defra/EA Flood and Coastal Erosion Risk Management R&D Programme, pp.66

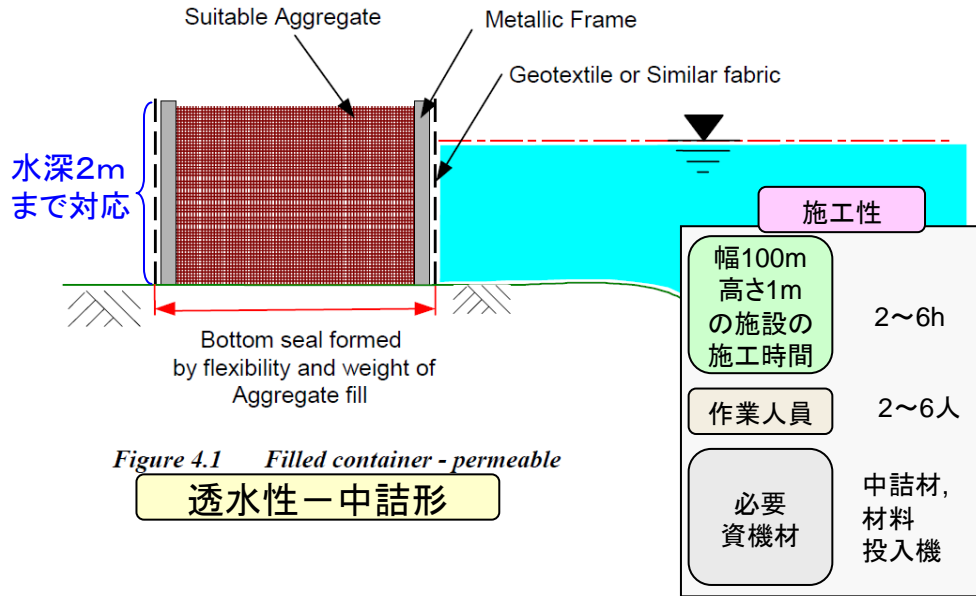
背面側の状況(さらに別の場所のもの)



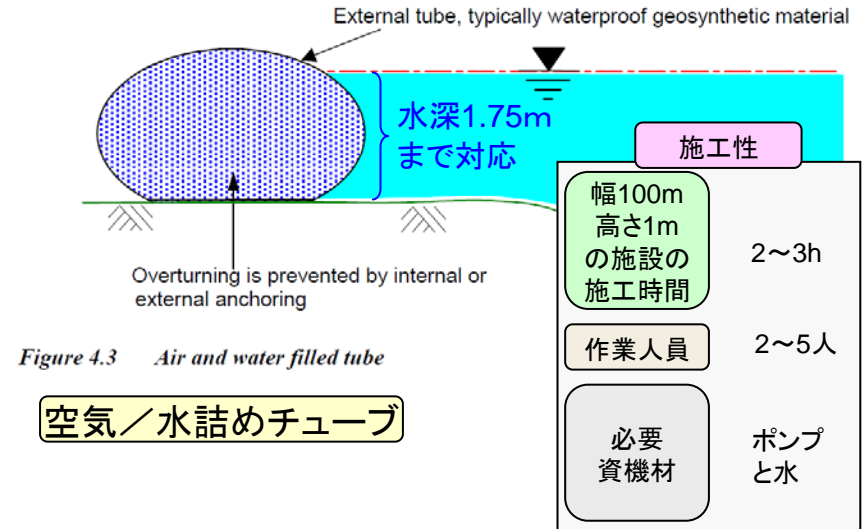
©Crown Copyright Defra 2007

# 英国では水防工法ガイド(案)が作成され、さらに防水壁等の水防資材の公開標準仕様(BSI PAS 1188-2:2003)も作成されている

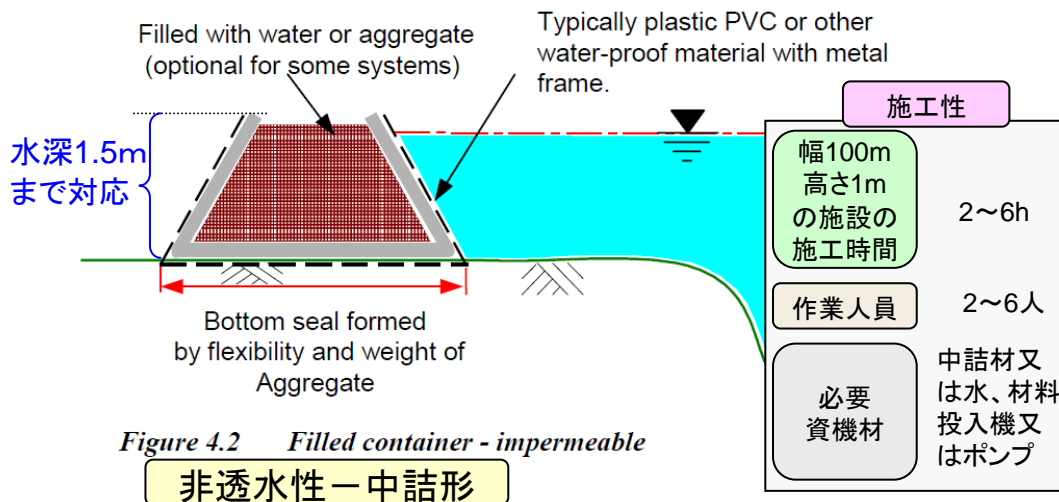
©Environment Agency April 2002



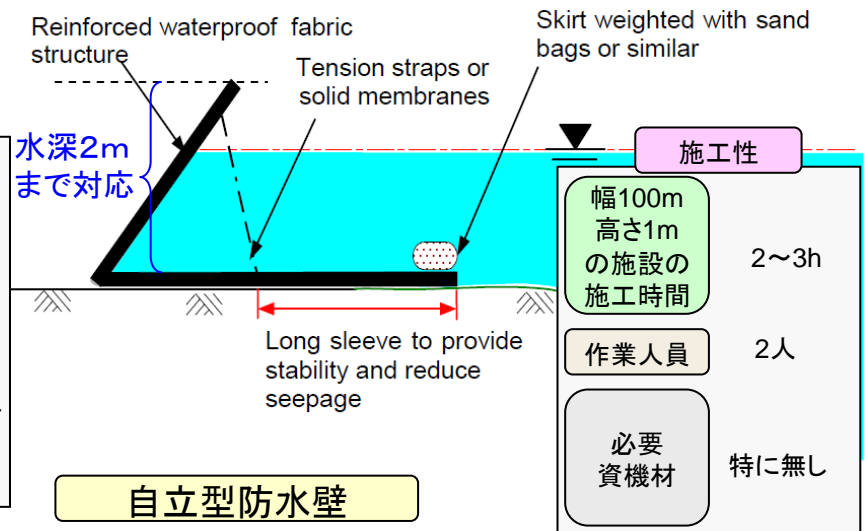
透水性—中詰形



空気/水詰めチューブ



非透水性—中詰形



# 英国における水防工法ガイド(案)より②

©Environment Agency April 2002

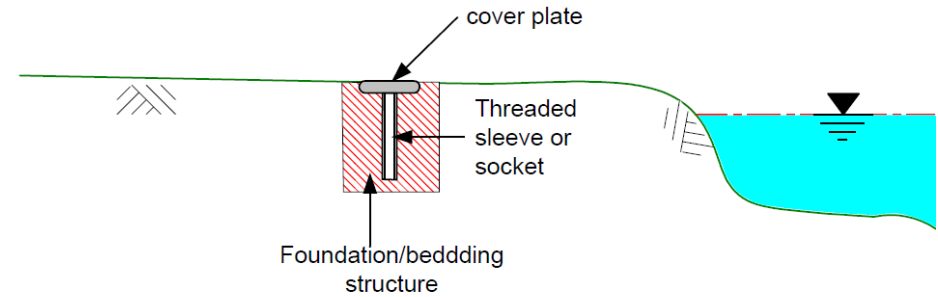
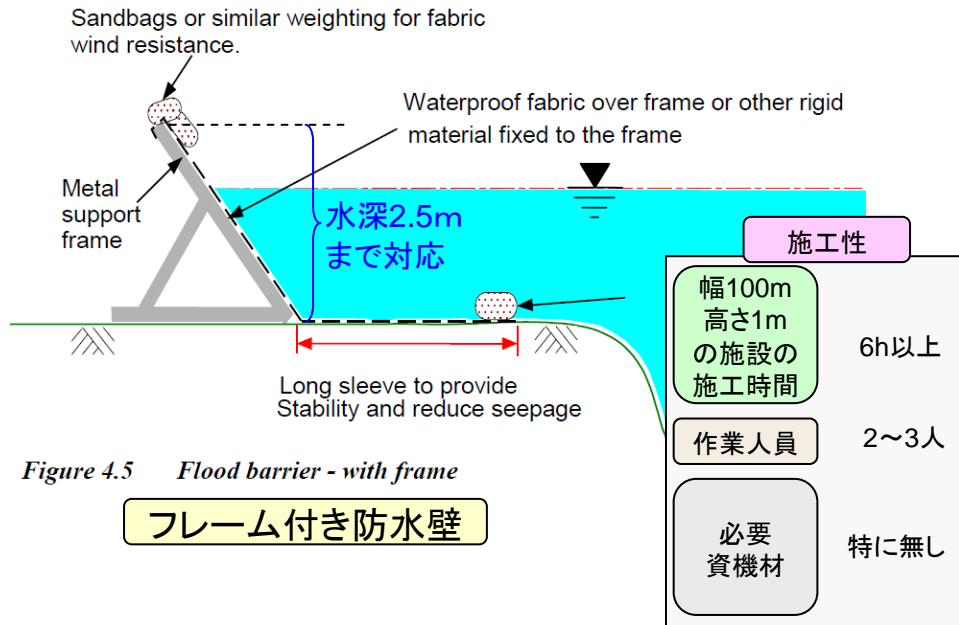


Figure 4.7a Flood barrier - flexible in normal conditions

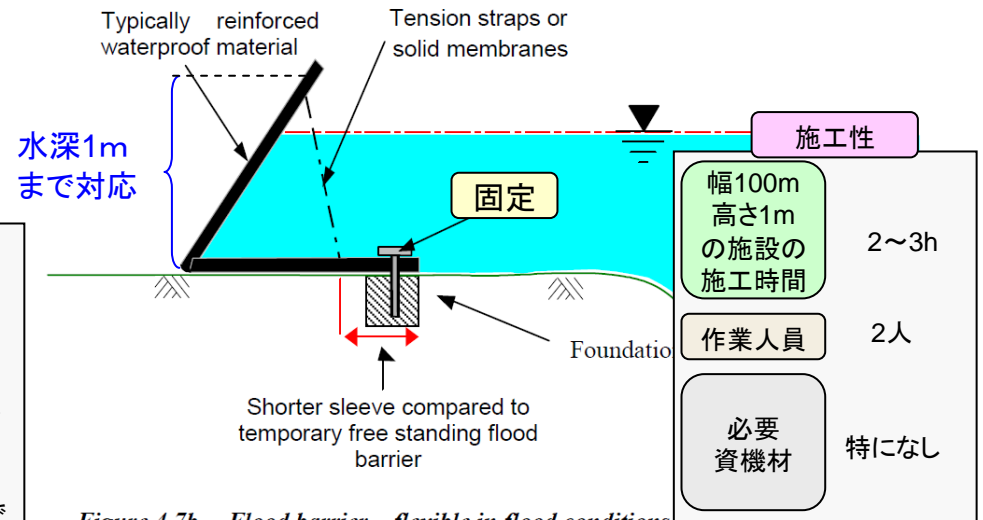
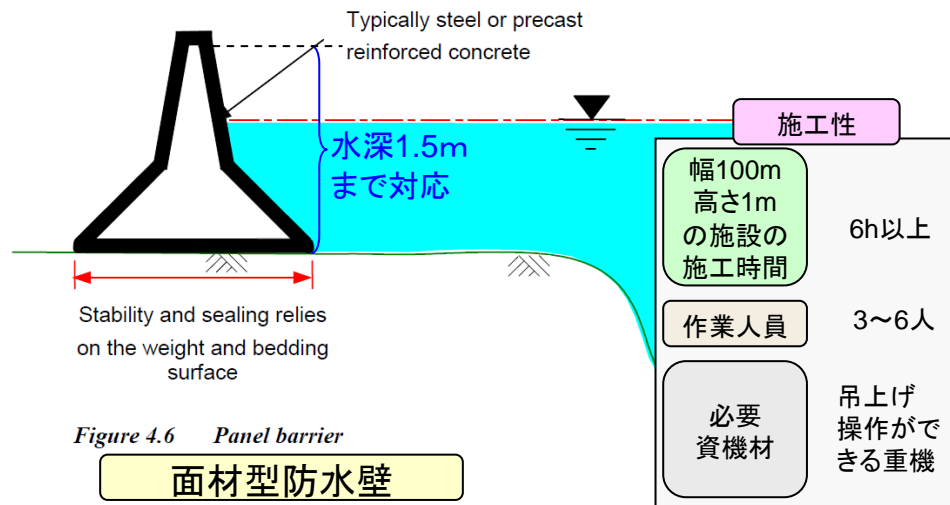
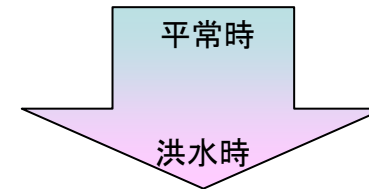


Figure 4.7b Flood barrier - flexible in flood conditions

**固定式防水壁～洪水時可動型**

# 英国における水防工法ガイド(案)より③

- ・自動操作により数分で設置できる製品もある
- ・最大で5mの浸水深に対応した製品もある

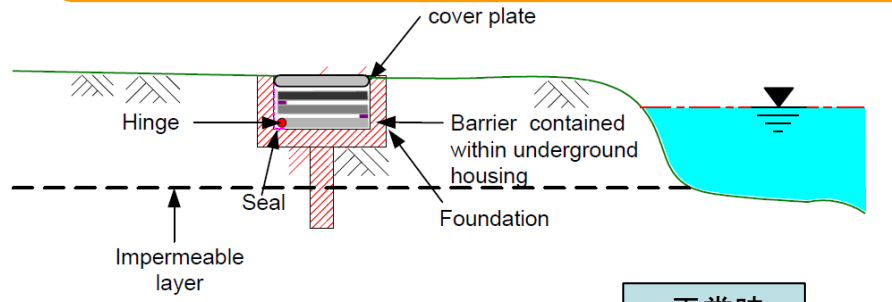


Figure 4.8a Flood barrier - rigid in normal conditions

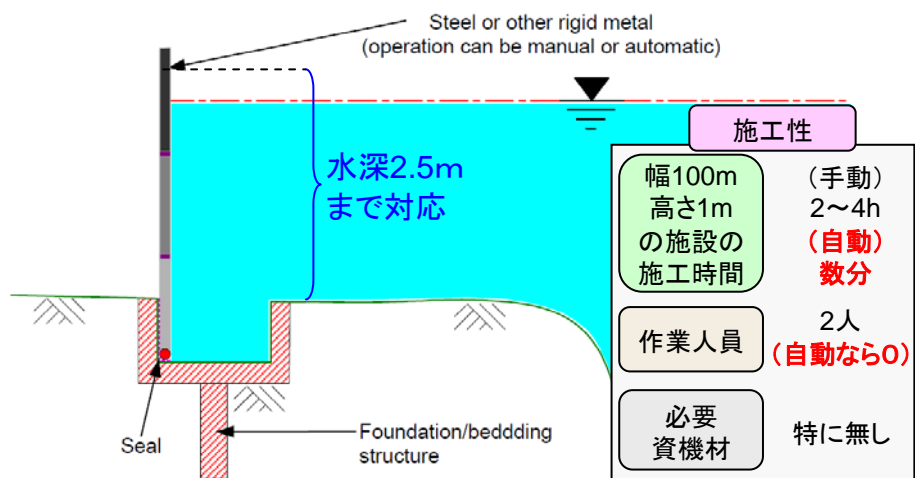
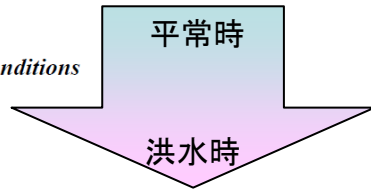


Figure 4.8b Flood barrier - rigid in flood conditions

固定式防水壁～洪水時固定型

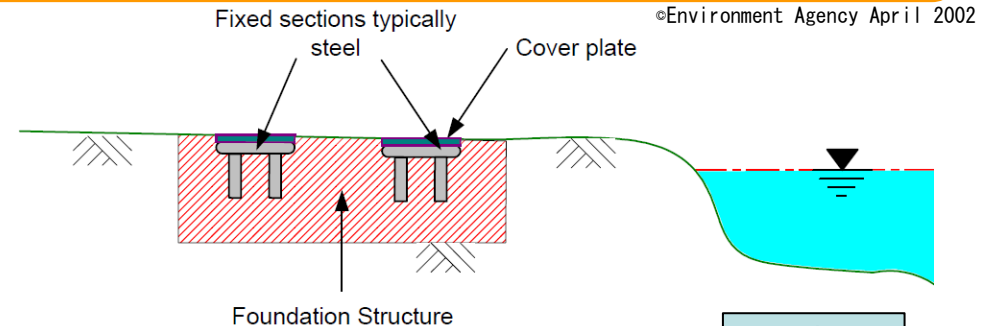


Figure 4.9a Demountable panel barrier in normal conditions

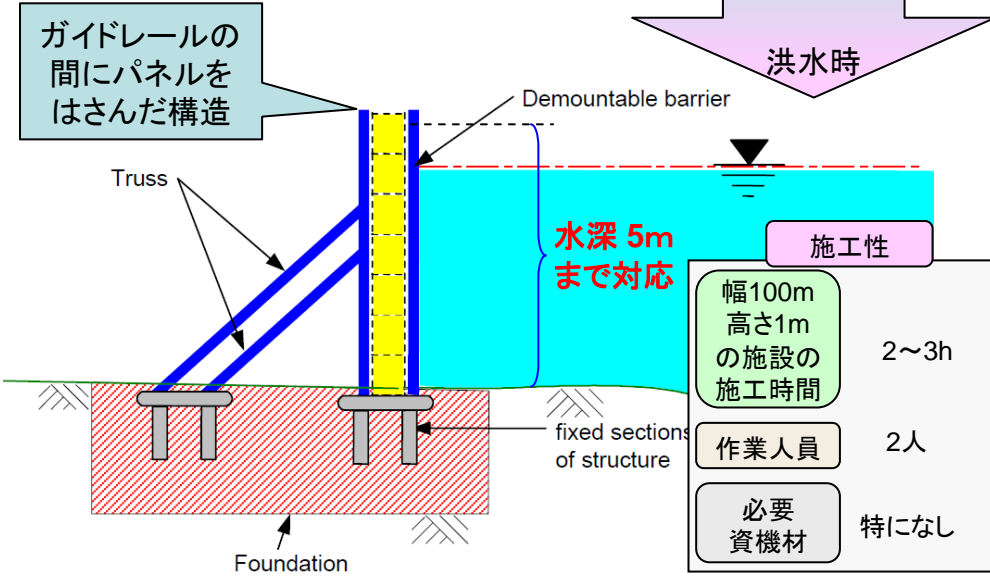
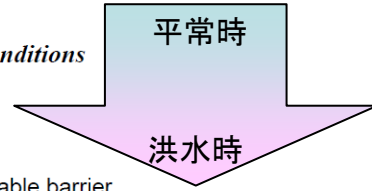


Figure 4.9b Demountable panel barrier in flood condition

固定式の面材型防水壁