

APPENDIX

- Fig. A-1 Major Natural Disasters in Japan Since 1945
- Fig. A-2 Number of Fatalities and Missing Persons Due to Natural Disasters
- Fig. A-3 Trends in Facility Damage and the Amount and as a Percentage of Gross Domestic Product (GDP)
- Fig. A-4 Facility Damage Due to Disasters in 2021, by Hazard
- Fig. A-5 Evolution of Disaster Management Laws and Systems Since 1945
- Fig. A-6 Major Disaster Management Laws by Type of Disaster
- Fig. A-7 Disaster Risk Management Budgets by Year

Fig. A-1

Major Natural Disasters in Japan Since 1945

Date	Disaster Name	Main Affected Areas	Number of Fatalities and Missing Persons
January 13, 1945	Mikawa Earthquake (M6.8)	Southern Aichi Prefecture	2,306
September 17-18, 1945	Typhoon Makurazaki	Western Japan (Especially in Hiroshima Prefecture)	3,756
December 21, 1946	Nankai Earthquake (M8.0)	Various places in and to Western Chubu region	1,443
August 14, 1947	Mt. Asama Eruption	Around Mt. Asama	11
September 14-15, 1947	Typhoon Kathleen	In and north of Tokai area	1,930
June 28, 1948	Fukui Earthquake (M7.1)	In and around the Fukui Plains	3,769
September 15-17, 1947	Typhoon Ione	From Shikoku into Tohoku regions (Especially in Iwate Prefecture)	838
September 2-4, 1950	Typhoon Jane	In and north of Shikoku region (Especially in Osaka Prefecture)	539
October 13-15, 1951	Typhoon RUTH (5115)	Nationwide (Especially in Yamaguchi Prefecture)	943
March 4, 1952	Earthquake Off the Coast of Tokachi (M8.2)	Southern Hokkaido and Northern Tohoku region	33
June 25-29, 1953	Heavy Rains	Kyushu, Shikoku and Chugoku regions (Especially in Kitakyushu)	1,013
July 16-24, 1953	Nanki Torrential Rains	In and west of Tohoku region (Especially in Wakayama Prefecture)	1,124
May 8-12, 1954	Windstorm	Northern Japan, Kinki region	670
September 25-27, 1954	Typhoon Marie	Nationwide (Especially in Hokkaido and Shikoku region)	1,761
July 25-28, 1957	Isahaya Torrential Rains	Kyushu region (Especially around Isahaya area)	722
June 24, 1958	Mt. Aso Eruption	Around Mt. Aso	12
September 26-28, 1945	Typhoon Ida	In and east of Kinki region (Especially in Shizuoka Prefecture)	1,269
September 26-27, 1959	Typhoon Vera	Nationwide (Except for Kyushu region; especially in Aichi Prefecture)	5,098
May 23, 1960	Chile Earthquake and Tsunami	Southern Coast of Hokkaido, Sanriku and Shima Coasts	142
January 1963	Damage from snowfall in 1963	Hokuriku and San-in areas, and Yamagata, Shiga and Gifu Prefectures	231
June 16, 1964	Niigata Earthquake (M7.5)	Niigata, Akita and Yamagata Prefectures	26
September 10-18, 1965	Typhoons SHIRLEY (6523), TRIX (6524), VIRGINIA (6525)	Nationwide (Especially in Tokushima, Hyogo and Fukui Prefectures)	181
September 23-25, 1966	Typhoons HELEN (6624), IDA (6626)	Chubu, Kanto and Tohoku regions (Especially in Shizuoka and Yamanashi Prefectures)	317
July to August 1967	Torrential Rains of July and August	Western Chubu and Southern Tohoku regions	256
May 16, 1968	1968 Earthquake Off the Coast of Tokachi (M7.9)	Southern Hokkaido and Tohoku region, mainly in Aomori Prefecture	52
July 3-15, 1972	The Heavy Rain Event of July 1972	Nationwide (Especially in Kitakyushu area and Shimane and Hiroshima Prefectures)	447
May 9, 1974	Earthquake Off the Coast of Izu Peninsula (M6.9)	Southern Tip of Izu Peninsula	30
September 8-14, 1976	Typhoon FRAN (7617) and Torrential Rains of September	Nationwide (Especially in Kagawa and Okayama Prefectures)	171
January 1977	Damage from snowfall	Tohoku and Northern Kinki regions and the Hokuriku area	101
August 7, 1977- October 1978	1977 Mt. Usu Eruption	Hokkaido	3
January 14, 1978	1978 Earthquake Inshore of Izu-Oshima Island (M7.0)	Izu Peninsula	25
June 12, 1978	1978 Earthquake Off the Coast of Miyagi Prefecture (M7.4)	Miyagi Prefecture	28
October 17-20, 1979	Typhoon TIP (7920)	Nationwide (Especially in Tokai area, and Kanto and Tohoku regions)	115
December 1980 – March 1981	Damage from snowfall	Tohoku region and Hokuriku area	152
July to August 1982	Torrential Rains of July-August and Typhoon BESS (8210)	Nationwide (Especially in Nagasaki, Kumamoto and Mie Prefectures)	439
May 26, 1983	1983 Central Japan Sea Earthquake (M7.7)	Akita and Aomori Prefectures	104
July 20-29, 1983	Seasonal Torrential Rains	In and east of San-in area (Especially in Shimane Prefecture)	117
October 3, 1983	1983 Miyake Is. Eruption	Around Miyake-jima Island	–
December 1983 - March 1984	Damage from snowfall	Tohoku region and Hokuriku area (Especially in Niigata and Toyama Prefectures)	131

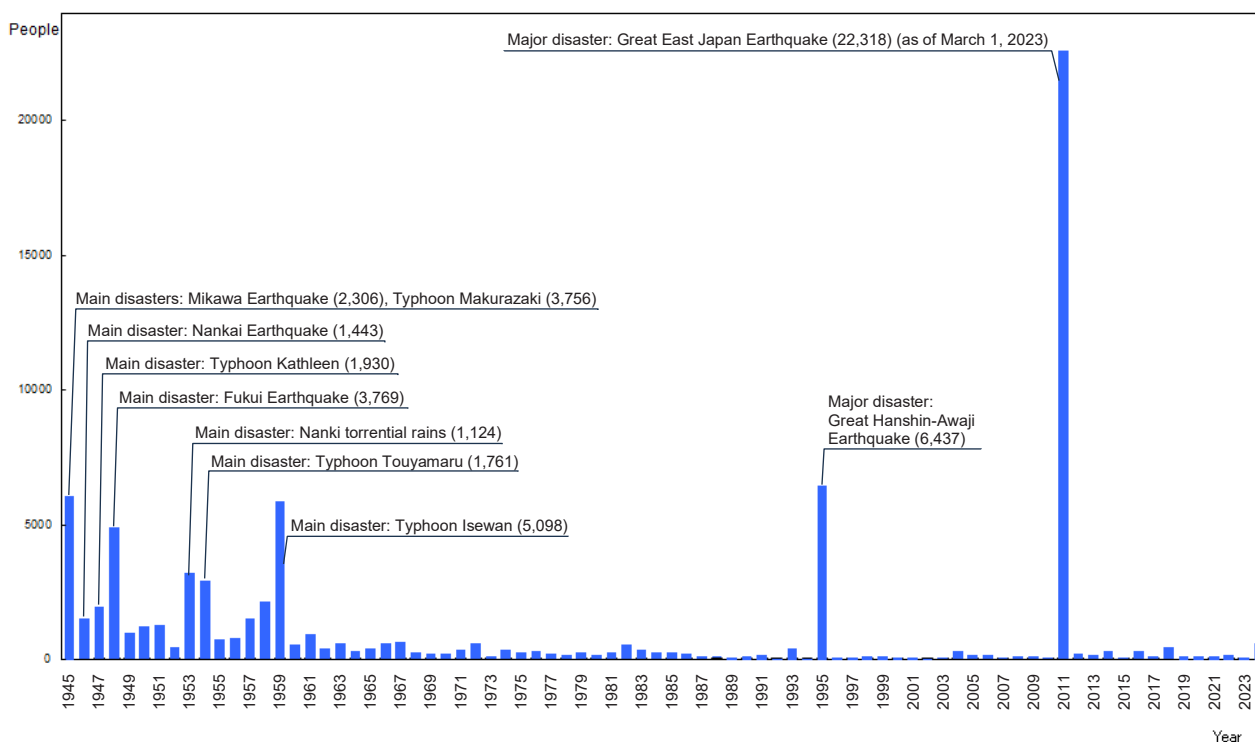
Date	Disaster Name	Main Affected Areas	Number of Fatalities and Missing Persons
September 14, 1984	1984 Western Nagano Prefecture Earthquake (M6.8)	Western Nagano Prefecture	29
November 15 – December 18, 1986	1986 Izu-Oshima Is. Eruption	Izu-Oshima Island	–
November 17, 1990 – June 3, 1995	1991 Mt. Unzen Eruption	Nagasaki Prefecture	44
July 12, 1993	1993 Earthquake Off the Coast of the Southwestern Part of Hokkaido (M7.8)	Hokkaido	230
July 31 – August 7, 1993	The Heavy Rain Event of August 1993	Nationwide	79
January 17, 1995	Great Hanshin-Awaji Earthquake (M7.3)	Hyogo Prefecture	6,437
March 31, 2000 - June 28, 2001	1977 Mt. Usu Eruption	Hokkaido	–
June 25, 2000 - March 31, 2005	2000 Miyake Is. Eruption and Niijima and Kozushima Is. Earthquake (M6.5)	Tokyo	1
October 20-21, 2004	2004 Typhoon TOKAGE (0423)	Nationwide	98
October 23, 2004	The mid-Niigata prefecture Earthquake in 2004 (M6.8)	Niigata Prefecture	68
December 2005 - March 2006	Damage from snowfall 2006	The Coast of the Japan Sea mainly in Hokuriku area	152
July 16, 2007	The Niigata-ken Chuetsu-oki Earthquake in 2007	Niigata Prefecture	15
June 14, 2008	The Iwate-Miyagi Nairiku Earthquake in 2008 (M7.2)	Tohoku region (Especially in Miyagi and Iwate Prefectures)	23
December 2010 - March 2011	Damage from snowfall	From Northern to Western Japan on the Japan Sea Coast	131
March 11, 2011	The 2011 off the Pacific coast of Tohoku Earthquake (Mw9.0)	Eastern Japan (Especially in Miyagi, Iwate and Fukushima Prefectures)	22,332
August 30 - September 5, 2011	Typhoon TALAS (1112)	Kinki and Shikoku regions	98
November 2011 - March 2012	Heavy Snowfall of 2011	From Northern to Western Japan on the Japan Sea Coast	133
November 2012 - March 2013	Heavy Snowfall of November 2012	From Northern to Western Japan on the Japan Sea Coast	104
November 2013 - May 2014	Heavy Snowfall of 2013	From Northern Japan to Kanto-Koshinetsu area (Especially in Yamanashi Prefecture)	95
August 20, 2014	The Heavy Rain Event of August 2014	Hiroshima Prefecture	77
September 27, 2014	2014 Eruption of Mt. Ontake	Nagano and Gifu Prefectures	63
April 14 and 16, 2016	The 2016 Kumamoto Earthquake (M7.3)	Kyushu area (Especially in Kumamoto Prefecture)	276
June 28 - July 8, 2018	The Heavy Rain Event of July 2018	Nationwide (Especially in Hiroshima, Okayama and Ehime Prefectures)	271
September 6, 2018	The 2018 Hokkaido Eastern Iburi Earthquake (M6.7)	Hokkaido	43
October 10 – 13, 2019	Typhoon Hagibis	Kanto and Tohoku regions	108
July 3-31, 2020	The Heavy Rain Event of July 2020	Nationwide (Especially in Kyushu region)	88
November 2020 – April 2021	Snow Disasters in 2020	The Sea of Japan side, from northern Japan to eastern Japan	110
July 1 – 14, 2021	Heavy Rain from July 1 of 2021	Nationwide (Especially in Shizuoka Prefecture)	29
January 1, 2024	2024 Noto Peninsula Earthquake (M7.6)	Ishikawa, Niigata and Toyama Prefectures	551

Note 1: The disasters listed resulted in fatalities and missing persons: 500 or more for storm and flood disasters, 100 or more for snowfall disasters, and 10 or more for earthquakes, tsunamis, and volcanic eruptions. It also includes disasters for which governmental Major Disaster Management Headquarters were established based on the Basic Act on Disaster Management. The number of fatalities and missing persons is the current figure as of end-March, 2025.

Note 2: The Noto Peninsula Earthquake of 2024 refers to the largest earthquake in a series of seismic events, specifically the earthquake that occurred in the Noto region of Ishikawa Prefecture at 4:10 PM on January 1, 2024.

Source: Formulated by the Cabinet Office based on the meteorological almanac of Japan, Chronological Scientific Tables, National Police Agency materials, Fire and Disaster Management Agency materials, Extreme Disaster Management Headquarters materials, Major Disaster Management Headquarters materials, and Hyogo Prefecture materials

Fig A-2 Number of Fatalities and Missing Persons Due to Natural Disasters

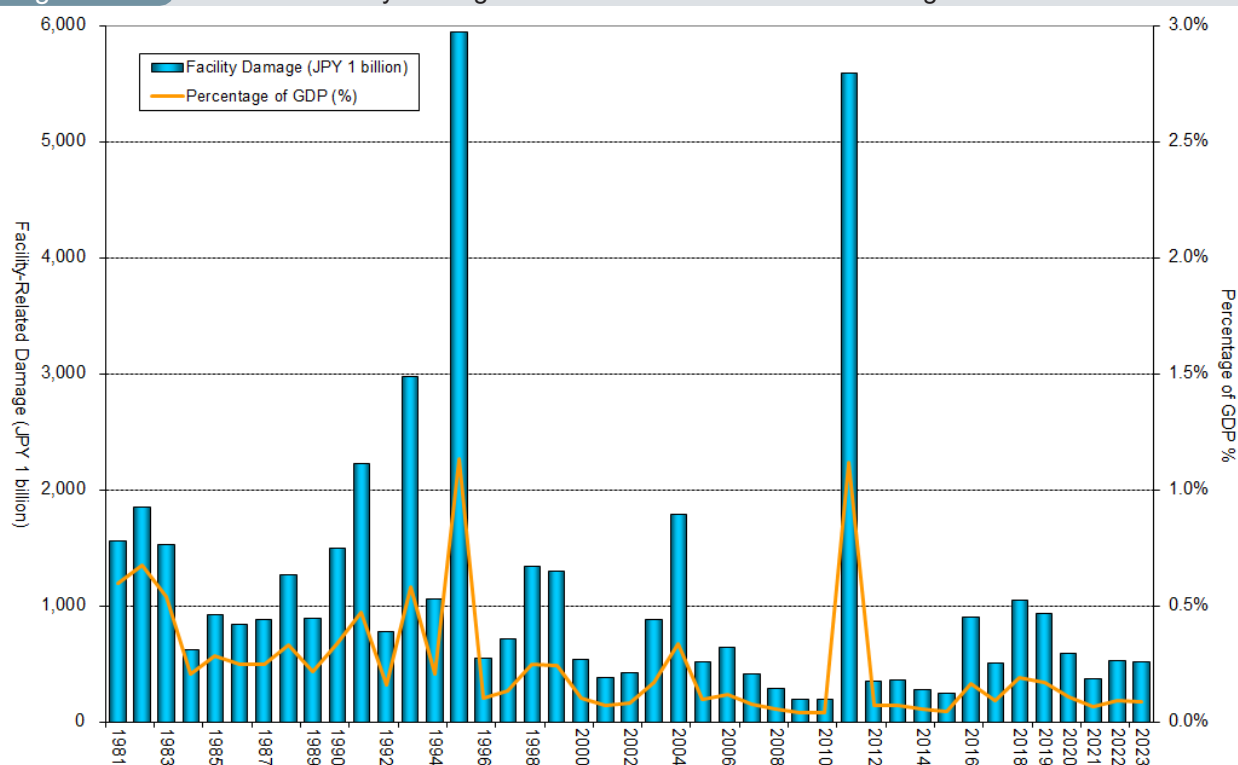


Note: The fatalities and missing persons in 2024 are based on flash bulletins from the Cabinet Office.

Year		Persons		Year		Persons		Year		Persons	
1945	6,062	62	381	79	208	96	84	13	173		
46	1,504	63	575	80	148	97	71	14	280		
47	1,950	64	307	81	232	98	109	15	65		
48	4,897	65	367	82	524	99	141	16	297		
49	975	66	578	83	301	2000	78	17	129		
50	1,210	67	607	84	199	01	90	18	452		
51	1,291	68	259	85	199	02	48	19	159		
52	449	69	183	86	148	03	62	20	128		
53	3,212	70	163	87	69	04	318	21	150		
54	2,926	71	350	88	93	05	148	22	159		
55	727	72	587	89	96	06	177	23	80		
56	765	73	85	90	123	07	41	24	607		
57	1,515	74	324	91	190	08	101				
58	2,120	75	213	92	19	09	115				
59	5,868	76	273	93	438	10	89				
60	528	77	174	94	39	11	22,585				
61	902	78	153	95	6,482	12	192				

Source: Fatalities and missing persons for the year 1945 came only from major disasters (source: Chronological Scientific Table). Years 1946–1952 use the Japanese Meteorological Disasters Annual Report; years 1953–1962 use National Police Agency documents; years 1963 and after formulated by Cabinet Office based on Fire and Disaster Management Agency materials.

Fig. A-3 Trends in Facility Damage and the Amount and as a Percentage of Gross Domestic



Note: Gross domestic product (GDP) figures up to 1993 are based on the 2000 standard (SNA 1993), while those for 1994 onward are based on the 2011 standard (SNA 2008)

Source: Formulated by the Cabinet Office based on materials from various ministries and agencies

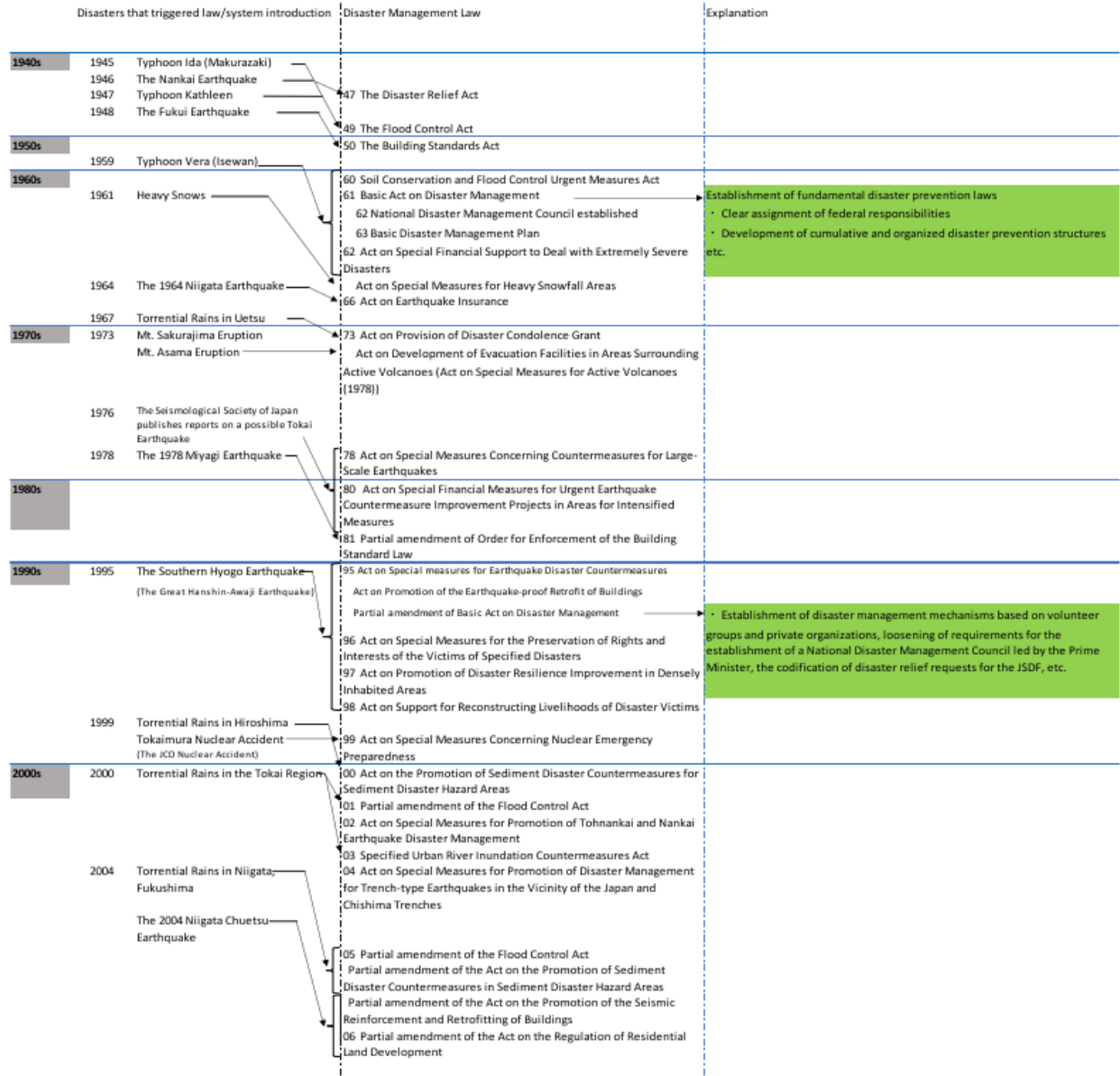
Fig. A-4 Facility Damage Due to Disasters in 2023, by Hazard

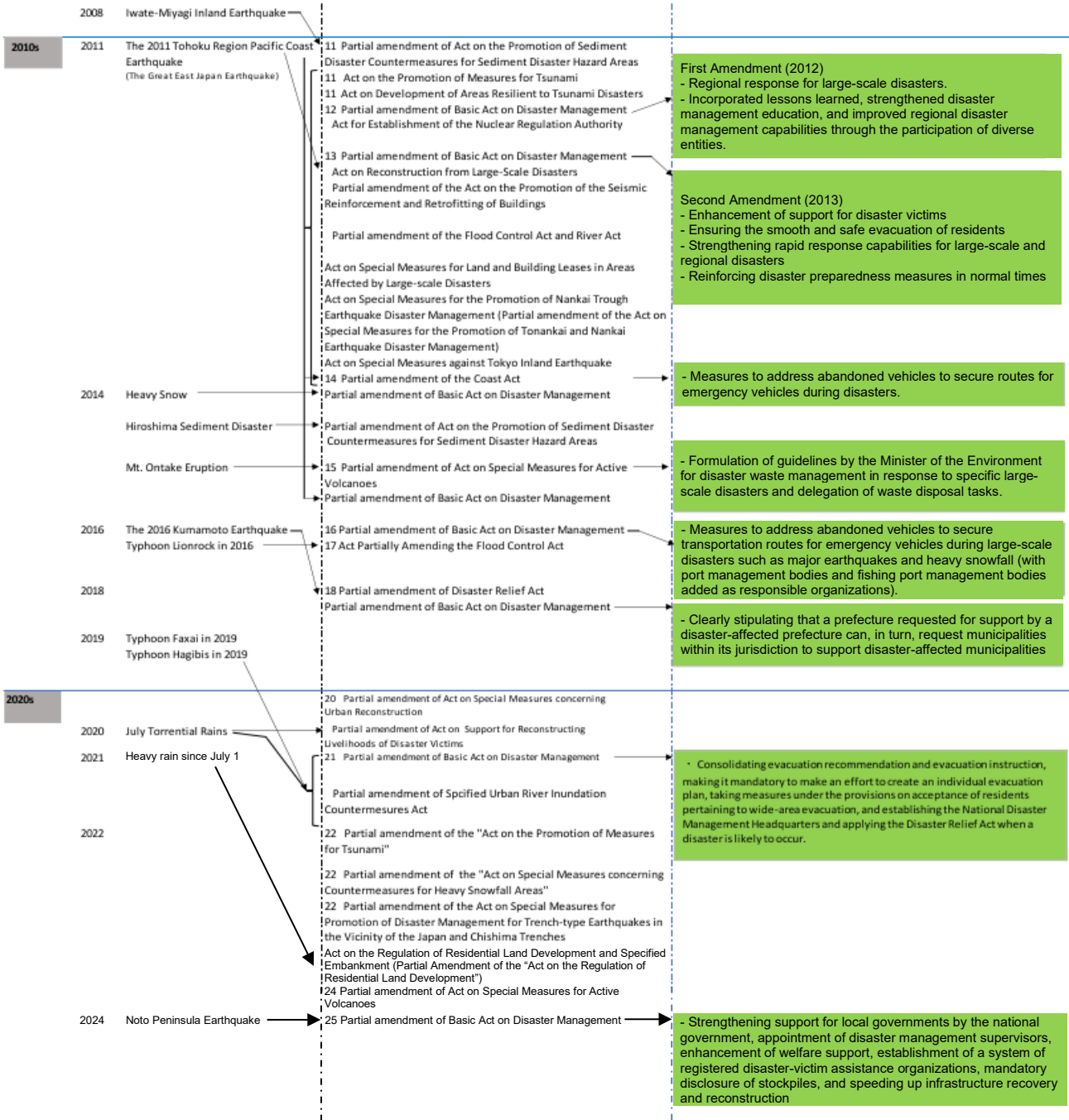
Classification	Typhoon (JPY 1 million yen)	Torrential rain (JPY 1 million yen)	Earthquake (JPY 1 million yen)	Heavy snowfall (JPY 1 million yen)	Others (JPY 1 million yen)	Total (JPY 1 million yen)	Notes
Public works	66,201	193,897	5,112	6	14,195	279,410	Rivers, forestry conservation facilities, ports, etc.
Agriculture, forestry and fisheries industry	47,586	161,599	922	498	5,376	215,981	Farmland, agricultural facilities, forestry roads, fishing facilities, etc.
Educational facilities	1,023	2,762	244	27	423	4,478	School facilities, cultural properties, etc.
Public welfare facilities	2,644	8,712	2,247	0	255	13,858	Social welfare facilities, waterworks facilities, etc.
Other facilities	3,548	1,979	24	64	0	5,615	Nature parks, telegraph/telephone, urban facilities, etc.
Total	121,002	368,949	8,549	594	20,249	519,343	

Note: Totals may not agree due to rounding. Source: Formulated by the Cabinet Office based on materials from various ministries and agencies

Fig. A-5

Evolution of Disaster Management Laws and Systems Since 1945





Source: Cabinet Office

Fig. A-6

Major Disaster Management Laws by Type of Disaster

Type	Prevention	Emergency Response	Recovery/ Reconstruction	
Earthquakes, Tsunamis	Basic Act on Disaster Management		<p><General Relief and Support Measures></p> <ul style="list-style-type: none"> - Act on Special Financial Support to Deal with Extremely Severe Disasters <p><Relief and Support Measures for Affected People></p> <ul style="list-style-type: none"> - Small and Medium-sized Enterprise Credit Insurance Act - Act on Financial Support of Farmers, Forestry Workers and Fishery Workers Suffering from Natural Disaster - Act on Provision of Disaster Condolence Grant - Employment Insurance Act - Act on Support for Reconstructing Livelihoods of Disaster Victims - Japan Finance Corporation Act - Act on Prohibition regarding Attachment of Donation for Natural Disaster <p><Disposal of Disaster Waste></p> <ul style="list-style-type: none"> - Waste Management and Public Cleansing Act <p><Disaster Recovery Work></p> <ul style="list-style-type: none"> - Act on Temporary Measures for Subsidies from National Treasury for Expenses for Project to Recover Facilities for Agriculture, Forestry and Fisheries Damaged by Disaster - Act on National Treasury's Sharing of Expenses for Project to Recover Public Civil Engineering Works Damaged by Disaster - Act on National Treasury's Sharing of Expenses for Recovery of Public School Facilities Damaged by Disaster - Act on Special Measures concerning Reconstruction of Urban Districts Damaged by Disaster - Act on Special Measures concerning Reconstruction of Condominiums Destroyed by Disaster <p>< Insurance and Mutual Aid System ></p> <ul style="list-style-type: none"> - Act on Earthquake Insurance - Agricultural Insurance Act - Government Managed Forest Insurance Act <p><Acts relating to Disaster Taxation></p> <ul style="list-style-type: none"> - Act on Reduction or Release, Deferment of Collection and Other Measures Related to Tax Imposed on Disaster Victims <p><Others></p> <ul style="list-style-type: none"> - Act on Special Measures for the Preservation of Rights and Interests of the Victims of Specified Disasters - Act on Special Financial Support for the Promoting Group Relocation for Disaster Mitigation - Act on Special Measures for Land and Building Leases in Areas Affected by Large-scale Disaster 	
		<ul style="list-style-type: none"> - Act on Special Measures Concerning Countermeasures for Large-Scale Earthquakes 		<ul style="list-style-type: none"> - Disaster Relief Act - Fire Service Act - Police Act - Self-Defense Forces Act - Act on Promotion of Development of Ships Utilization Medical Care Provision System in Times of Disaster, etc.
		<ul style="list-style-type: none"> - Act on the Promotion of Measures for Tsunami 		
		<ul style="list-style-type: none"> - Act on Special Financial Measures for Urgent Earthquake Countermeasure Improvement Projects in Areas for Intensified Measures - Act on Special Measures for Earthquake Disaster Countermeasures - Act on Special Measures for Promoting Disaster Management of Nankai Trough Earthquake - Act on Special Measures against Tokyo Inland Earthquake - Act on Special Measures for Promotion of Disaster Management for Trench-type Earthquakes in the Vicinity of the Japan and Chishima Trenches - Act on Promotion of the Earthquake-proof Retrofit of Buildings - Act on Promotion of Disaster Resilience Improvement in Densely Inhabited Areas - Act on Development of Areas Resilient to Tsunami Disasters 		
		<ul style="list-style-type: none"> - Coast Act 		
	Volcano	<ul style="list-style-type: none"> - Act on Special Measures for Active Volcanoes 		
Storm and Flood Disaster	<ul style="list-style-type: none"> - Coast Act - River Act 			
Landslides, rockfalls, debris flow	<ul style="list-style-type: none"> - Erosion Control Act - Forest Act - Landslide Prevention Act - Act on Prevention of Disasters caused by Steep Slope Failure - Act on Promotion of Sediment Disaster Countermeasures in Sediment Disaster Hazard Areas - Act on the Regulation of Residential Land Development and Specified Embankments 	<ul style="list-style-type: none"> - Flood Control Act 		
Heavy snowfall	<ul style="list-style-type: none"> - Act on Special Measures for Heavy Snowfall Areas 			
	<ul style="list-style-type: none"> - Act on Special Measures Concerning Maintenance of Road Traffic in Specified Snow Coverage and Cold Districts 			
Nuclear power	<ul style="list-style-type: none"> - Act on Special Measures Concerning Nuclear Emergency Preparedness 	<ul style="list-style-type: none"> - Act on Reconstruction from Large-scale Disasters 		

Source: Cabinet Office data

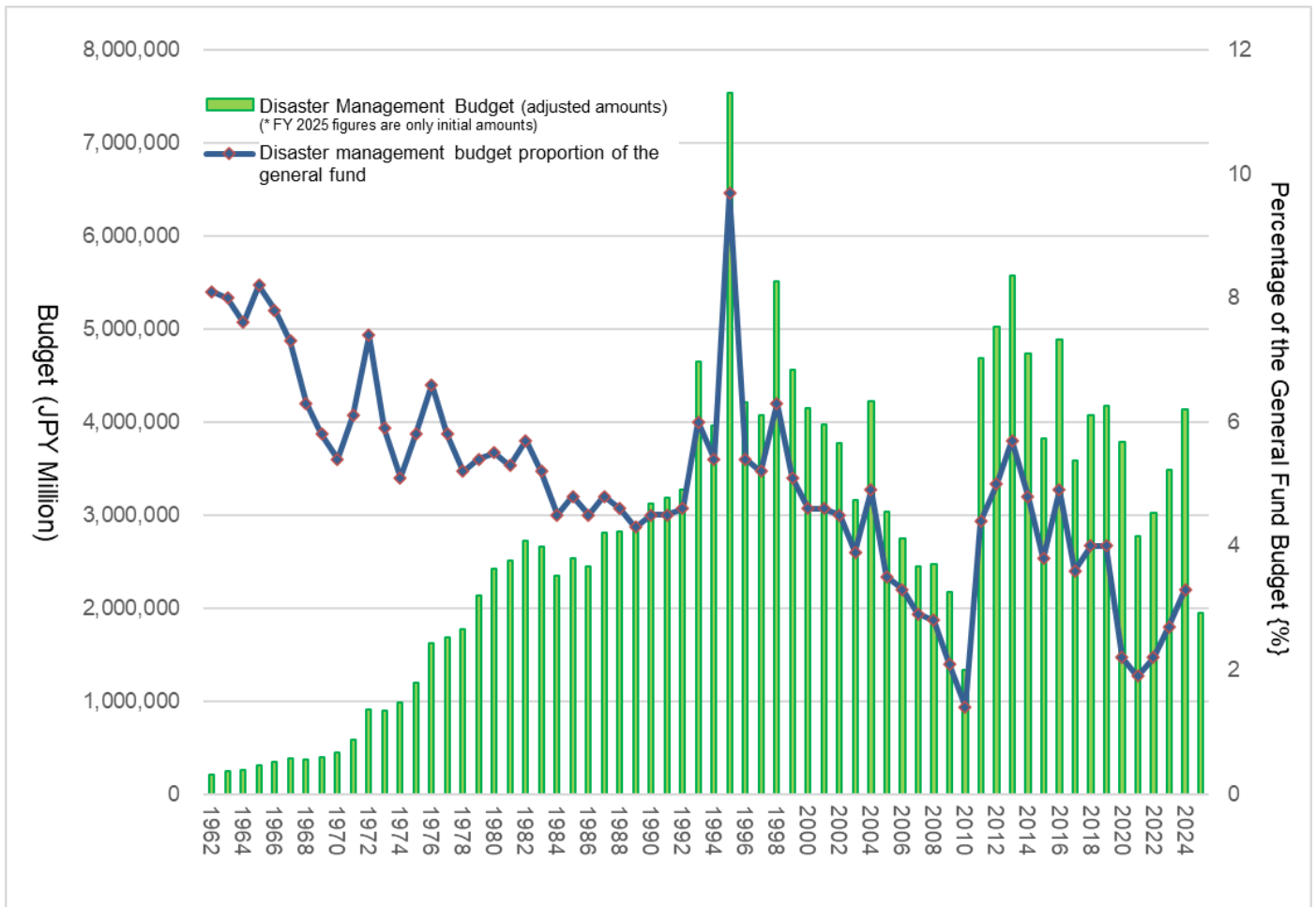
Fig. A-7 Major Disaster Management Laws by Type of Disaster

Fiscal Year	Science and Technology Research		Disaster Prevention		Land Conservation		Disaster Reconstruction		Total (JPY million)
	(million yen)	Share (%)	(million yen)	Share (%)	(million yen)	Share (%)	(million yen)	Share (%)	
1962	751	0.4	8,864	4.3	97,929	47.1	100,642	48.3	208,006
1963	1,021	0.4	8,906	3.7	116,131	47.7	117,473	48.2	243,522
1964	1,776	0.7	13,724	5.4	122,409	48.3	115,393	45.6	253,302
1965	1,605	0.5	17,143	5.6	147,858	48.3	139,424	45.6	306,030
1966	1,773	0.5	20,436	5.9	170,650	49.0	155,715	44.7	348,574
1967	2,115	0.6	23,152	6.1	197,833	52.3	154,855	41.0	377,955
1968	2,730	0.7	25,514	6.8	207,600	55.4	138,815	37.1	374,659
1969	2,747	0.7	30,177	7.5	236,209	59.0	131,270	32.8	400,403
1970	2,756	0.6	36,027	8.2	269,159	60.9	133,998	30.3	441,940
1971	3,078	0.5	50,464	8.6	352,686	60.3	178,209	30.5	584,437
1972	3,700	0.4	93,425	10.3	488,818	54.1	316,895	35.1	902,838
1973	6,287	0.7	111,321	12.4	493,580	54.9	287,082	32.0	898,270
1974	14,569	1.5	118,596	12.1	505,208	51.5	342,556	34.9	980,929
1975	17,795	1.5	159,595	13.3	615,457	51.3	405,771	33.9	1,198,618
1976	21,143	1.3	186,297	11.5	711,159	43.9	700,688	43.3	1,619,287
1977	22,836	1.4	234,409	13.9	904,302	53.6	525,886	31.2	1,687,433
1978	29,642	1.7	307,170	17.3	1,093,847	61.6	345,603	19.5	1,776,262
1979	35,145	1.6	435,963	20.4	1,229,401	57.6	432,759	20.3	2,133,268
1980	29,929	1.2	456,575	18.9	1,229,615	50.8	705,168	29.1	2,421,287
1981	29,621	1.2	474,926	18.9	1,240,788	49.5	761,950	30.4	2,507,285
1982	28,945	1.1	469,443	17.2	1,261,326	46.3	963,984	35.4	2,723,698
1983	29,825	1.1	489,918	18.4	1,268,712	47.6	875,851	32.9	2,664,306
1984	28,215	1.2	485,219	20.7	1,350,592	57.7	475,878	20.3	2,339,904
1985	27,680	1.1	512,837	20.2	1,355,917	53.5	640,225	25.2	2,536,659
1986	28,646	1.2	482,889	19.7	1,354,397	55.3	581,462	23.8	2,447,394
1987	38,296	1.4	612,505	21.9	1,603,599	57.2	548,337	19.6	2,802,737
1988	31,051	1.1	587,073	20.8	1,550,132	54.9	657,681	23.3	2,825,937
1989	34,542	1.2	588,354	20.7	1,638,104	57.5	587,819	20.6	2,848,819
1990	35,382	1.1	625,239	20.0	1,669,336	53.4	796,231	25.5	3,126,188
1991	35,791	1.1	628,596	19.8	1,729,332	54.3	788,603	24.8	3,182,322
1992	36,302	1.1	745,405	22.8	2,017,898	61.6	475,411	14.5	3,275,015
1993	43,152	0.9	866,170	18.6	2,462,800	52.9	1,280,569	27.5	4,652,691
1994	40,460	1.0	747,223	18.9	1,945,295	49.1	1,230,072	31.0	3,963,050
1995	105,845	1.4	1,208,134	16.0	2,529,386	33.5	3,696,010	49.0	7,539,375
1996	52,385	1.2	1,029,658	24.5	2,156,714	51.3	968,182	23.0	4,206,938
1997	49,128	1.2	1,147,102	28.2	2,014,695	49.4	864,370	21.2	4,075,295
1998	62,435	1.1	1,228,539	22.3	2,905,921	52.8	1,310,515	23.8	5,507,411
1999	78,134	1.7	1,142,199	25.0	2,400,534	52.6	941,886	20.6	4,562,752
2000	73,502	1.8	1,011,535	24.4	2,376,083	57.3	689,225	16.6	4,150,346
2001	49,310	1.2	1,060,445	26.7	2,238,816	56.4	618,427	15.6	3,966,998
2002	48,164	1.3	1,202,984	31.9	1,981,686	52.5	543,949	14.4	3,776,783
2003	35,133	1.1	814,101	25.7	1,625,670	51.4	689,255	21.8	3,164,159
2004	30,478	0.7	815,059	19.3	1,753,418	41.5	1,622,112	38.4	4,221,067
2005	11,097	0.4	866,290	28.6	1,426,745	47.0	728,606	24.0	3,032,738
2006	11,627	0.4	689,505	25.1	1,439,129	52.3	610,302	22.2	2,750,563
2007	9,687	0.4	706,853	29.0	1,332,222	54.6	391,637	16.0	2,440,399
2008	8,921	0.4	819,359	33.2	1,275,135	51.7	363,471	14.7	2,466,886
2009	8,761	0.4	498,397	23.0	1,383,254	63.7	279,789	12.9	2,170,201

Fiscal Year	Science and Technology Research		Disaster Prevention		Land Conservation		Disaster Reconstruction		Total (JPY million) (million yen)
	(million yen)	Share (%)	(million yen)	Share (%)	(million yen)	Share (%)	(million yen)	Share (%)	
2010	7,695	0.6	224,841	16.9	813,359	61.1	285,038	21.4	1,330,933
2011	28,072	0.6	383,384	8.2	743,936	15.9	3,534,830	75.4	4,690,222
2012	53,496	1.1	1,010,535	20.1	951,561	19.0	2,854,537	56.9	5,016,359
2013	15,339	0.3	786,046	14.1	879,932	15.8	3,881,875	69.6	5,573,470
2014	16,688	0.4	771,210	16.3	841,367	17.8	3,102,691	65.6	4,731,956
2015	14,961	0.4	701,843	18.4	155,239	4.1	2,951,923	77.2	3,823,966
2016	14,023	0.3	696,399	14.3	318,320	6.5	3,855,516	78.9	4,884,258
2017	10,123	0.3	790,361	22.1	267,629	7.5	2,515,384	70.2	3,583,497
2018	22,781	0.6	737,429	18.1	482,711	11.8	2,834,284	69.5	4,077,205
2019	14,390	0.3	814,471	19.5	512,324	12.3	2,835,790	67.9	4,176,975
2020	15,726	0.4	1,037,401	27.2	437,134	11.5	2,320,286	60.9	3,810,547
2021	26,756	0.5	1,108,485	33.3	404,554	7.5	1,226,931	58.2	2,766,726
2022	14,806	0.5	1,122,603	37.2	693,159	23.0	1,186,362	39.3	3,016,930
2023	37,291	1.1	1,321,461	37.9	738,664	21.2	1,389,623	39.9	3,487,039
2024	45,263	1.1	1,639,237	39.7	776,389	18.8	1,670,619	40.4	4,131,508
2025	7,932	0.4	1,044,526	53.7	104,931	5.4	786,671	40.5	1,944,060

- Note**
1. These are adjusted budget (national expenditures) amounts. However, the FY2025 figures are preliminary figures reflecting the initial budget.
 2. The reduced amount allocated to science and technology research in FY2007 is largely due to the structural conversion of national labs and research institutions into independent administrative agencies (the budgets of independent administrative agencies are not included in this table).
 3. The amount allocated to disaster prevention in FY2009 is reduced because a portion of the revenue sources set aside for road construction were converted to general fund sources, making it impossible to allocate certain portions to the disaster management budget.
 4. The reduced amount allocated to disaster prevention and land conservation in FY2010 is due to the fact that, following the creation of the Comprehensive Social Infrastructure Development Grant, some disaster prevention policies and many subsidy programs in land conservation were established using those grants.

Source: Formulated by the Cabinet Office based on materials from various ministries and agencies



Source: Formulated by the Cabinet Office based on materials from various ministries and agencies